

itl boulder

THE LIGHT CENTER OF THE INDUSTRY SINCE 1955

INDEPENDENT TESTING LABORATORIES, INC.
3386 LONGHORN ROAD, BOULDER, CO 80302 USA

PHONE: (303)442-1255 • FAX: (303)449-5274 • E-MAIL: itl@itlboulder.com • WEBSITE: www.itlboulder.com

REPORT NUMBER: ITL61318

DATE: 11/19/08

PREPARED FOR: SCOTT ARCHITECTURAL LIGHTING

LUMINAIRE: FABRICATED WHITE PAINTED METAL BALLAST HOUSING, SIX FORMED WHITE PAINTED METAL SOCKET MOUNTING BRACKETS, TRANSLUCENT WHITE CYLINDRICAL FROSTED PLASTIC DIFFUSER WITH TRANSLUCENT WHITE FLAT FROSTED PLASTIC BOTTOM, FABRICATED WHITE PAINTED METAL DIFFUSER SUPPORT ASSEMBLY/CROSSPIECE, FABRICATED WHITE PAINTED METAL MOUNTING STEM, DIFFUSER FROSTED SIDE OUT, OPEN TOP.

LAMPS: SIX 42-WATT TRIPLE TWIN TUBE COMPACT FLUORESCENTS, SYLVANIA CF42DT/E/IN/827/ECO, HORIZONTAL POSITION.

BALLASTS: TWO UNIVERSAL C2642UNVSE, TWO UNIVERSAL C242UNVSE

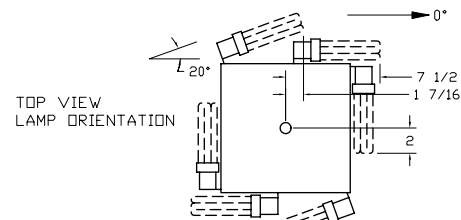
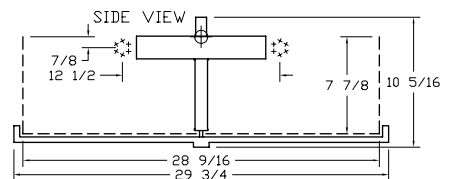
MOUNTING: PENDANT

TOTAL REFLECTANCE OF PAINT = 86.7 %

TOTAL INPUT WATTS = 306.1 AT 120.0 VOLTS

REPORT IS BASED ON 3200 LUMENS PER LAMP.

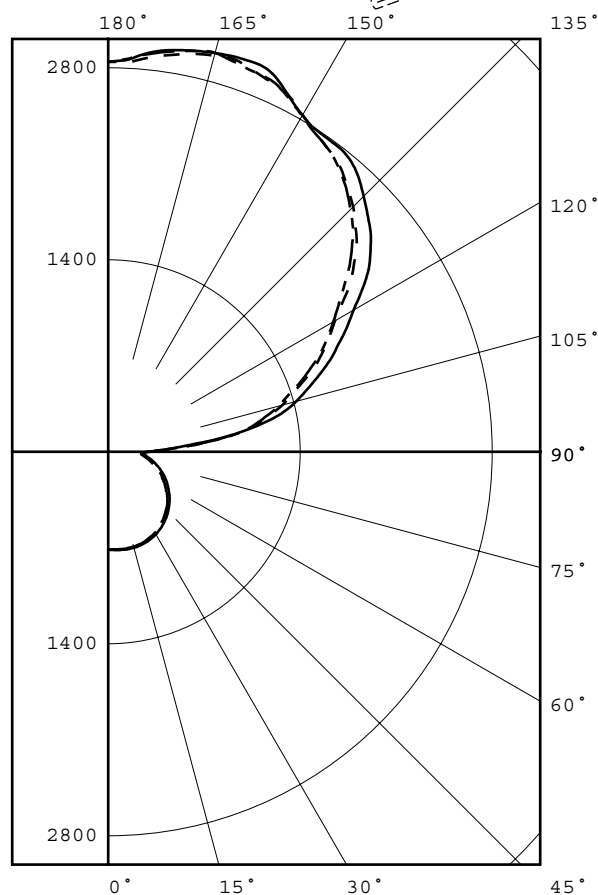
** (explanation follows) **



CANDELA DISTRIBUTION

	0.0	45.0	90.0	135.0	180.0
0	714	714	714	714	714
5	718	715	719	716	714
15	718	718	724	719	716
25	697	701	710	704	699
35	658	659	674	664	658
45	598	601	617	606	599
55	518	524	544	528	522
65	428	435	460	441	435
75	337	344	363	350	343
85	247	255	270	262	254
90	258	261	270	281	269
95	675	690	619	741	662
105	1314	1436	1419	1459	1286
115	1727	1907	1852	1915	1712
125	2158	2353	2318	2364	2098
135	2526	2674	2635	2696	2498
145	2743	2883	2788	2899	2743
155	2942	3073	2967	3088	2939
165	2991	3040	3010	3056	3012
175	2875	2895	2909	2918	2905
180	2843	2843	2843	2843	2843

FLUX



LEGEND:

0-deg: - - - - -
90-deg: = = = = =
180-deg: - - - - -

ZONAL LUMEN SUMMARY

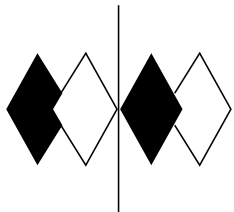
ZONE	LUMENS	%LAMP	%FIXT
0- 30	598	3.1	3.8
0- 40	1014	5.3	6.5
0- 60	1956	10.2	12.6
0- 90	3052	15.9	19.6
90-120	4106	21.4	26.3
90-130	6171	32.1	39.6
90-150	10001	52.1	64.2
90-180	12530	65.3	80.4
0-180	15582	81.2	100.0

TOTAL LUMINAIRE EFFICIENCY = 81.2 %

CIE TYPE - SEMI-INDIRECT

Checked N. WHITE

Approved R. BEATTIE



itl boulder
THE LIGHT CENTER OF THE INDUSTRY SINCE 1955

INDEPENDENT TESTING LABORATORIES, INC.
3386 LONGHORN ROAD, BOULDER, CO 80302 USA

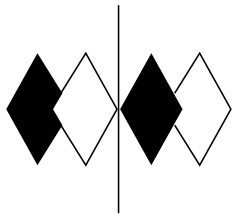
PHONE: (303)442-1255 • FAX: (303)449-5274 • E-MAIL: itl@itlboulder.com • WEBSITE: www.itlboulder.com

REPORT NUMBER: ITL61318
PREPARED FOR: SCOTT ARCHITECTURAL LIGHTING

DATE: 11/19/08

CANDELA DISTRIBUTION

	0.0	22.5	45.0	67.5	90.0	112.5	135.0	157.5	180.0
0.0	714	714	714	714	714	714	714	714	714
5.0	718	714	715	718	719	717	716	716	714
10.0	720	717	719	722	724	723	720	719	718
15.0	718	714	718	722	724	724	719	718	716
20.0	711	709	713	719	720	719	715	713	709
25.0	697	697	701	710	710	710	704	701	699
30.0	682	680	684	694	696	695	688	685	682
35.0	658	656	659	671	674	674	664	662	658
40.0	630	629	633	646	647	647	638	636	633
45.0	598	595	601	612	617	615	606	604	599
50.0	560	559	564	576	582	577	567	565	564
55.0	518	517	524	535	544	539	528	525	522
60.0	477	473	481	494	502	496	486	483	481
65.0	428	431	435	450	460	451	441	438	435
70.0	383	386	391	403	412	404	396	393	390
75.0	337	338	344	356	363	360	350	348	343
80.0	292	293	300	310	315	312	304	302	298
85.0	247	252	255	266	270	269	262	257	254
90.0	258	233	261	246	270	255	281	240	269
95.0	675	644	690	694	619	725	741	709	662
100.0	1076	1122	1179	1187	1111	1216	1225	1132	1067
105.0	1314	1368	1436	1468	1419	1506	1459	1371	1286
110.0	1519	1590	1662	1711	1637	1729	1681	1594	1495
115.0	1727	1831	1907	1941	1852	1975	1915	1821	1712
120.0	1909	2037	2151	2167	2066	2180	2140	2030	1896
125.0	2158	2263	2353	2401	2318	2407	2364	2253	2098
130.0	2366	2471	2560	2593	2497	2608	2572	2456	2320
135.0	2526	2610	2674	2743	2635	2754	2696	2615	2498
140.0	2658	2728	2743	2821	2758	2846	2774	2721	2643
145.0	2743	2819	2883	2848	2788	2910	2899	2803	2743
150.0	2835	2944	3012	2931	2834	2950	3013	2926	2827
155.0	2942	3022	3073	3029	2967	3033	3088	3022	2939
160.0	2984	3031	3071	3052	3030	3065	3089	3032	2971
165.0	2991	3010	3040	3021	3010	3040	3056	3025	3012
170.0	2942	2961	2987	2974	2974	2996	3002	2980	2967
175.0	2875	2878	2895	2896	2909	2910	2918	2909	2905
180.0	2843	2843	2843	2843	2843	2843	2843	2843	2843



itl boulder
THE LIGHT CENTER OF THE INDUSTRY SINCE 1955

INDEPENDENT TESTING LABORATORIES, INC.
3386 LONGHORN ROAD, BOULDER, CO 80302 USA

PHONE: (303)442-1255 • FAX: (303)449-5274 • E-MAIL: itl@itlboulder.com • WEBSITE: www.itlboulder.com

REPORT NUMBER: ITL61318

DATE: 11/19/08

PREPARED FOR: SCOTT ARCHITECTURAL LIGHTING

ZONAL LUMEN SUMMARY

0- 5	17.
5- 10	51.
10- 15	86.
15- 20	118.
20- 25	149.
25- 30	176.
30- 35	199.
35- 40	217.
40- 45	230.
45- 50	238.
50- 55	239.
55- 60	235.
60- 65	226.
65- 70	213.
70- 75	195.
75- 80	175.
80- 85	152.
85- 90	134.
90- 95	246.
95-100	517.
100-105	695.
105-110	797.
110-115	890.
115-120	962.
120-125	1014.
125-130	1051.
130-135	1046.
135-140	1002.
140-145	933.
145-150	848.
150-155	755.
155-160	638.
160-165	501.
165-170	357.
170-175	211.
175-180	68.



INDEPENDENT TESTING LABORATORIES, INC.
3386 LONGHORN ROAD, BOULDER, CO 80302 USA

PHONE: (303)442-1255 • FAX: (303)449-5274 • E-MAIL: itl@itlboulder.com • WEBSITE: www.itlboulder.com

REPORT NUMBER: ITL61318

DATE: 11/19/08

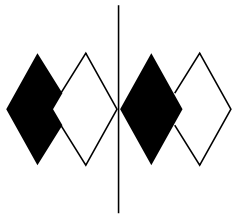
PREPARED FOR: SCOTT ARCHITECTURAL LIGHTING

COEFFICIENTS OF UTILIZATION - ZONAL CAVITY METHOD

EFFECTIVE FLOOR CAVITY REFLECTANCE 0.20

RC	80				70				50			30			10			0
RW	70	50	30	10	70	50	30	10	50	30	10	50	30	10	50	30	10	0
0	81	81	81	81	72	72	72	72	54	54	54	38	38	38	23	23	23	16
1	73	69	66	63	64	61	59	56	46	44	43	32	31	30	19	18	18	12
2	66	60	55	51	58	53	49	45	40	37	35	28	26	24	16	15	14	9
3	60	53	47	42	53	46	42	38	35	32	29	24	22	20	14	13	12	8
4	55	46	40	35	48	41	36	31	31	27	24	21	19	17	13	11	10	6
5	50	41	35	30	44	36	31	27	27	23	21	19	16	15	11	10	9	5
6	46	36	30	26	40	32	27	23	24	21	18	17	14	13	10	9	7	5
7	42	33	26	22	37	29	24	20	22	18	15	15	13	11	9	8	7	4
8	39	30	23	19	34	26	21	17	20	16	13	14	11	10	8	7	6	4
9	36	27	21	17	32	24	19	15	18	14	12	13	10	8	8	6	5	3
10	34	24	19	15	30	22	17	13	17	13	10	12	9	8	7	6	5	3

ALL CANDELA, LUMENS, LUMINANCE, COEFFICIENT OF UTILIZATION AND VCP VALUES IN THIS REPORT ARE BASED ON RELATIVE PHOTOMETRY WHICH ASSUMES A BALLAST FACTOR OF 1.000. ANY CALCULATIONS PREPARED FROM THESE DATA SHOULD INCLUDE AN APPROPRIATE BALLAST FACTOR.



itl boulder

THE LIGHT CENTER OF THE INDUSTRY SINCE 1955

INDEPENDENT TESTING LABORATORIES, INC.

3386 LONGHORN ROAD, BOULDER, CO 80302 USA

PHONE: (303)442-1255 • FAX: (303)449-5274 • E-MAIL: itl@itlboulder.com • WEBSITE: www.itlboulder.com

REPORT NUMBER: ITL61318

DATE: 11/19/08

PREPARED FOR: SCOTT ARCHITECTURAL LIGHTING

ADDENDUM

The compact fluorescent lamps of the type used in this report may require special attention in photometry and luminaire application. Specifically, the lamps may generate lower flux output when operated in the horizontal position than when operated in the vertical base-up position. Unfortunately, at the time of this report, only the vertical flux output (lumen) rating is available from the lamp manufacturer. It is critical to note that if the lamp produces less lumens when in a horizontal position than when it is in a vertical position, the horizontal lamp calibration will yield higher luminaire candela and efficiency than a vertical lamp calibration. When applying the vertical lamp lumen rating to a report for a luminaire with a horizontal lamp(s) and using a horizontal lamp calibration, the report will show higher candela values than what the luminaire actually produced (since a horizontal lamp produces lower flux). For a report which was generated using a horizontal lamp calibration, any application calculations should use the actual flux output (lumens) from a horizontal lamp -- at this time, no such published lumen figures are available. The published lamp lumen rating given on this report is for a vertical base-up lamp. The lamp calibration for this report was performed with the lamp(s) in the same orientation as when the lamp(s) is/are in the luminaire.

CFL.DIS