

REPORT NUMBER: ITL61286

DATE: 11/17/08

PREPARED FOR: SCOTT ARCHITECTURAL LIGHTING

LUMINAIRE: FABRICATED WHITE PAINTED METAL BALLAST HOUSING, FABRICATED WHITE PAINTED METAL REFLECTOR/WALL PLATE, TRANSLUCENT WHITE FROSTED PLASTIC DIFFUSER, FABRICATED WHITE PAINTED METAL LENS HOUSING/TRIM, DIFFUSER FROSTED SIDE OUT.

LAMP: ONE 50-WATT SINGLE ENDED TWIN TUBE FLUORESCENT, GE F50BX/SPX35/RS, VERTICAL BASE-DOWN POSITION.

BALLAST: ADVANCE ICN-2S54

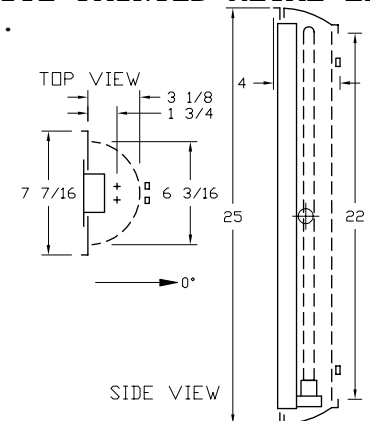
MOUNTING: WALL

TOTAL REFLECTANCE OF PAINT= 87.2 % (BALLAST COVER)

TOTAL REFLECTANCE OF PAINT= 88.0 % (WALL PLATE)

TOTAL INPUT WATTS = 57.7 AT 120.0 VOLTS

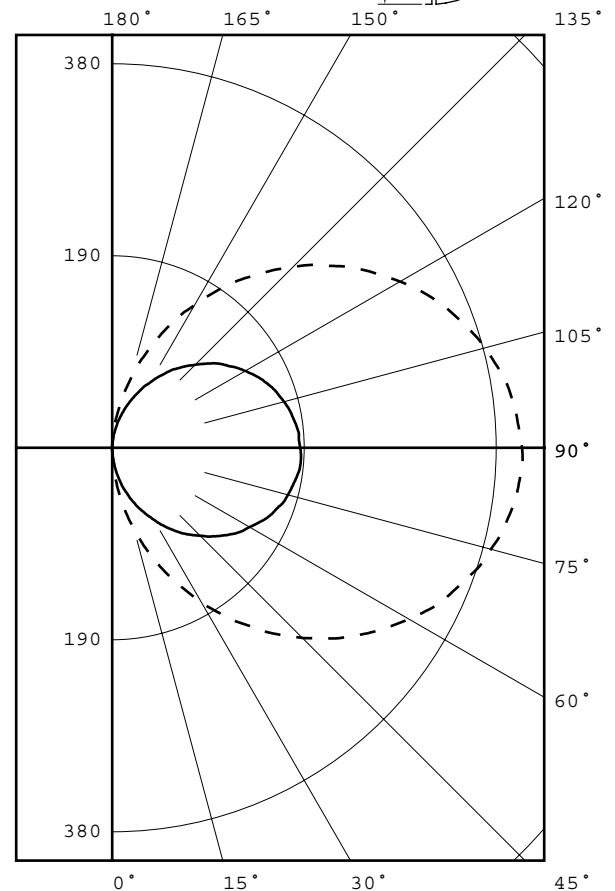
REPORT IS BASED ON 4000 LUMENS PER LAMP.



CANDELA DISTRIBUTION

FLUX

	0.0	45.0	90.0	135.0	180.0
0	0	0	0	0	0
5	23	22	11	2	0
15	83	75	40	6	0
25	145	129	68	10	0
35	208	181	97	13	0
45	266	231	123	17	0
55	317	276	148	20	0
65	360	311	167	22	0
75	388	336	180	23	0
85	404	350	187	24	0
90	405	335	186	24	0
95	401	318	185	24	0
105	382	304	176	23	0
115	350	278	162	21	0
125	306	243	141	19	0
135	253	202	116	15	0
145	195	156	89	12	0
155	133	108	60	8	0
165	71	58	32	5	0
175	15	13	7	1	0
180	0	0	0	0	0



ZONAL LUMEN SUMMARY

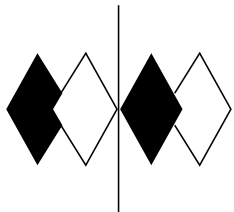
ZONE	LUMENS	%LAMP	%FIXT
0- 30	45	1.1	2.6
0- 40	108	2.7	6.1
0- 60	342	8.5	19.4
0- 90	918	23.0	52.0
90-120	539	13.5	30.6
90-130	664	16.6	37.6
90-150	808	20.2	45.8
90-180	846	21.2	48.0
0-180	1765	44.1	100.0

TOTAL LUMINAIRE EFFICIENCY = 44.1 %

CIE TYPE - DIRECT-INDIRECT

Checked N. WHITE

Approved R. BEATTIE



itl boulder
THE LIGHT CENTER OF THE INDUSTRY SINCE 1955

INDEPENDENT TESTING LABORATORIES, INC.
3386 LONGHORN ROAD, BOULDER, CO 80302 USA

PHONE: (303)442-1255 • FAX: (303)449-5274 • E-MAIL: itl@itlboulder.com • WEBSITE: www.itlboulder.com

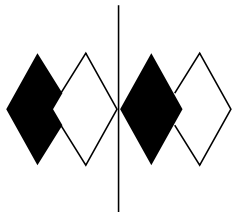
REPORT NUMBER: ITL61286

DATE: 11/17/08

PREPARED FOR: SCOTT ARCHITECTURAL LIGHTING

CANDELA DISTRIBUTION

	0.0	22.5	45.0	67.5	90.0	112.5	135.0	157.5	180.0
0.0	0	0	0	0	0	0	0	0	0
5.0	23	19	22	15	11	4	2	0	0
10.0	53	47	49	36	25	11	4	0	0
15.0	83	76	75	59	40	19	6	0	0
20.0	114	106	102	81	54	26	8	0	0
25.0	145	136	129	103	68	34	10	0	0
30.0	177	168	155	126	82	42	12	0	0
35.0	208	197	181	149	97	49	13	0	0
40.0	238	226	207	170	111	57	15	0	0
45.0	266	253	231	191	123	64	17	0	0
50.0	293	280	254	210	136	70	19	0	0
55.0	317	304	276	228	148	77	20	0	0
60.0	339	327	295	244	157	82	21	0	0
65.0	360	346	311	259	167	87	22	0	0
70.0	375	362	325	271	174	90	23	0	0
75.0	388	375	336	281	180	93	23	0	0
80.0	398	386	345	288	184	96	24	0	0
85.0	404	391	350	293	187	97	24	0	0
90.0	405	384	335	279	186	97	24	0	0
95.0	401	372	318	262	185	96	24	0	0
100.0	394	365	312	257	181	94	23	0	0
105.0	382	354	304	249	176	91	23	0	0
110.0	367	340	292	239	170	88	22	0	0
115.0	350	323	278	228	162	83	21	0	0
120.0	329	304	262	214	152	78	20	0	0
125.0	306	282	243	198	141	73	19	0	0
130.0	280	258	224	182	130	67	17	0	0
135.0	253	232	202	163	116	59	15	0	0
140.0	224	205	180	145	103	53	14	0	0
145.0	195	177	156	126	89	45	12	0	0
150.0	163	148	132	105	74	37	10	0	0
155.0	133	119	108	85	60	30	8	0	0
160.0	101	91	82	64	46	22	6	0	0
165.0	71	63	58	44	32	15	5	0	0
170.0	41	36	36	26	19	8	3	0	0
175.0	15	10	13	7	7	2	1	0	0
180.0	0	0	0	0	0	0	0	0	0



itl boulder
THE LIGHT CENTER OF THE INDUSTRY SINCE 1955

INDEPENDENT TESTING LABORATORIES, INC.
3386 LONGHORN ROAD, BOULDER, CO 80302 USA

PHONE: (303)442-1255 • FAX: (303)449-5274 • E-MAIL: itl@itlboulder.com • WEBSITE: www.itlboulder.com

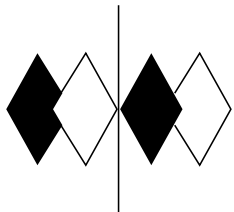
REPORT NUMBER: ITL61286

DATE: 11/17/08

PREPARED FOR: SCOTT ARCHITECTURAL LIGHTING

ZONAL LUMEN SUMMARY

0- 5	0.
5- 10	1.
10- 15	4.
15- 20	8.
20- 25	13.
25- 30	19.
30- 35	27.
35- 40	35.
40- 45	44.
45- 50	54.
50- 55	63.
55- 60	73.
60- 65	81.
65- 70	89.
70- 75	95.
75- 80	101.
80- 85	104.
85- 90	106.
90- 95	100.
95-100	98.
100-105	94.
105-110	89.
110-115	83.
115-120	75.
120-125	67.
125-130	58.
130-135	49.
135-140	40.
140-145	32.
145-150	24.
150-155	17.
155-160	11.
160-165	6.
165-170	3.
170-175	1.
175-180	0.



itl boulder
THE LIGHT CENTER OF THE INDUSTRY SINCE 1955

INDEPENDENT TESTING LABORATORIES, INC.
3386 LONGHORN ROAD, BOULDER, CO 80302 USA

PHONE: (303)442-1255 • FAX: (303)449-5274 • E-MAIL: itl@itlboulder.com • WEBSITE: www.itlboulder.com

REPORT NUMBER: ITL61286

DATE: 11/17/08

PREPARED FOR: SCOTT ARCHITECTURAL LIGHTING

COEFFICIENTS OF UTILIZATION - ZONAL CAVITY METHOD

EFFECTIVE FLOOR CAVITY REFLECTANCE 0.20

RC RW	80				70				50			30			10			0
	70	50	30	10	70	50	30	10	50	30	10	50	30	10	50	30	10	0
0	47	47	47	47	44	44	44	44	37	37	37	31	31	31	26	26	26	23
1	41	37	35	32	37	34	32	30	29	27	25	23	22	20	18	17	16	14
2	36	31	27	24	33	29	25	22	24	21	19	19	17	15	15	13	12	9
3	32	27	22	19	29	24	20	17	20	17	14	16	13	12	12	10	9	7
4	29	23	19	15	26	21	17	14	17	14	12	14	11	9	10	8	7	5
5	26	20	16	13	24	18	14	12	15	12	9	12	9	7	9	7	5	4
6	24	18	14	11	22	16	12	10	13	10	8	11	8	6	8	6	5	3
7	22	16	12	9	20	14	11	8	12	9	7	9	7	5	7	5	4	3
8	20	14	10	8	19	13	9	7	11	8	6	9	6	4	6	5	3	2
9	19	13	9	7	17	12	8	6	10	7	5	8	5	4	6	4	3	2
10	18	12	8	6	16	11	8	5	9	6	4	7	5	3	5	4	2	1

ALL CANDELA, LUMENS, LUMINANCE, COEFFICIENT OF UTILIZATION AND VCP VALUES IN THIS REPORT ARE BASED ON RELATIVE PHOTOMETRY WHICH ASSUMES A BALLAST FACTOR OF 1.000. ANY CALCULATIONS PREPARED FROM THESE DATA SHOULD INCLUDE AN APPROPRIATE BALLAST FACTOR.

NOTE: THE ZONAL CAVITY CALCULATION TECHNIQUE IS ACCURATE WHEN LUMINAIRES WITH SYMMETRIC CANDELA DISTRIBUTIONS ARE EMPLOYED AND WHEN THE LUMINAIRES ARE LOCATED SYMMETRICALLY THROUGHOUT THE ROOM. THIS UNIT HAS SPECIAL CHARACTERISTICS AND THEREFORE THESE COEFFICIENTS SHOULD BE USED WITH CAUTION.