



INDEPENDENT TESTING LABORATORIES, INC.
3386 LONGHORN ROAD, BOULDER, CO 80302 USA

PHONE: (303)442-1255 • FAX: (303)449-5274 • E-MAIL: itl@itlboulder.com • WEBSITE: www.itlboulder.com

REPORT NUMBER: ITL61274

DATE: 11/07/08

PREPARED FOR: SCOTT ARCHITECTURAL LIGHTING

LUMINAIRE: SPUN WHITE PAINTED METAL HOUSING WITH TWO 8.5" LONG X 9.5" WIDE UPLIGHT APERTURES EACH WITH FLAT PERFORATED WHITE PAINTED METAL DIFFUSER, TWO FORMED WHITE PAINTED METAL REFLECTORS/SOCKET MOUNTING PLATES, CLEAR PRISMATIC PLASTIC DROP LENS WITH FABRICATED WHITE PAINTED METAL LENS RETAINING DISC CENTERED ON BOTTOM, LENS PRISMS OUTWARD. BLACK PAINTED BALLASTS ARE EXPOSED AND OFFSET TO EACH SIDE OF OPTICAL COMPARTMENT WITH BOTTOM AND BOTH SIDES COVERED WITH WHITE PLASTIC TAPE.

LAMPS: SIX 40-WATT SINGLE ENDED TWIN TUBE FLUORESCENTS, PHILIPS PL-L 40W/35/RS/IS, LAMPS HORIZONTAL WITH TUBES HORIZONTAL.

BALLASTS: TWO SYLVANIA QHE3X40DL UNV ISN-SC

MOUNTING: SUSPENDED

THE 0 DEGREE PLANE IS PARALLEL WITH THE LAMPS.

TOTAL REFLECTANCE OF PAINT = 86.9 %

TOTAL INPUT WATTS = 174.3 AT 120.0 VOLTS

REPORT IS BASED ON 3300 LUMENS PER LAMP.

CANDELA DISTRIBUTION

	0.0	22.5	45.0	67.5	90.0	FLUX
0	4150	4150	4150	4150	4150	
5	4131	4137	4138	4140	4142	394
15	3976	4003	4042	4085	4101	1143
25	3681	3742	3851	3954	3989	1775
35	3195	3303	3493	3660	3709	2174
45	2509	2669	2876	3087	3158	2208
55	1708	1812	1916	2097	2194	1737
65	1070	1072	1097	1194	1246	1135
75	679	723	782	825	799	807
85	368	404	433	488	508	486
90	249	273	316	340	353	
95	169	180	225	217	240	228
105	134	143	143	153	149	157
115	189	204	208	229	225	210
125	256	271	289	314	312	258
135	326	338	358	392	400	280
145	396	411	422	446	450	266
155	453	471	470	483	484	219
165	484	494	504	510	509	142
175	509	513	514	517	518	49
180	515	515	515	515	515	

ZONAL LUMEN SUMMARY

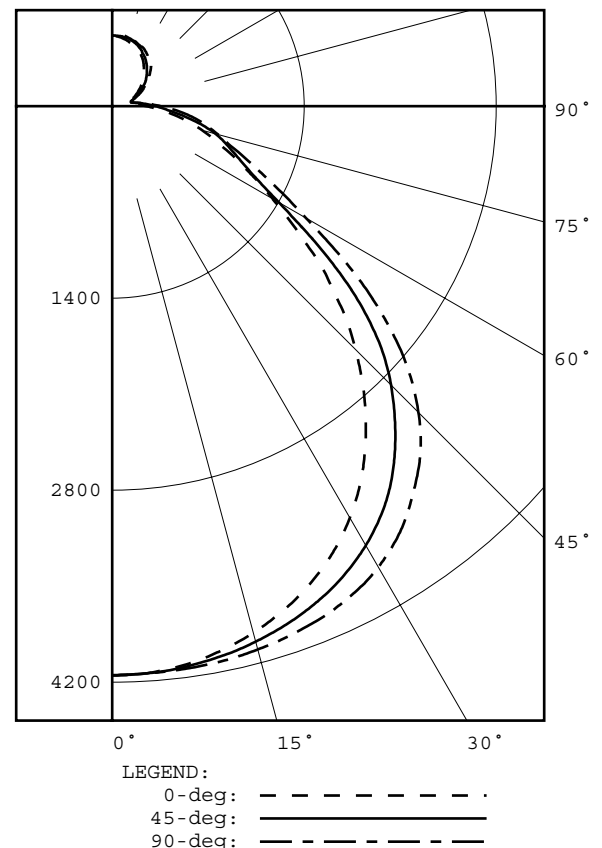
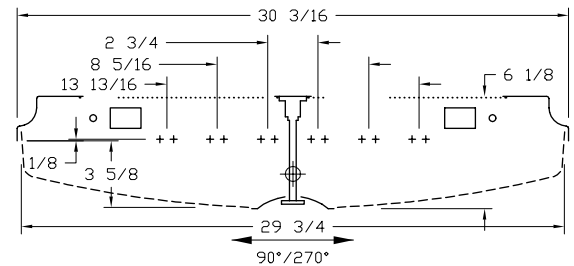
ZONE	LUMENS	%LAMP	%FIXT
0- 30	3312	16.7	24.2
0- 40	5486	27.7	40.1
0- 60	9431	47.6	69.0
0- 90	11859	59.9	86.8
90-120	594	3.0	4.3
90-130	853	4.3	6.2
90-150	1399	7.1	10.2
90-180	1808	9.1	13.2
0-180	13667	69.0	100.0

TOTAL LUMINAIRE EFFICIENCY = 69.0 %

CIE TYPE - SEMI-DIRECT

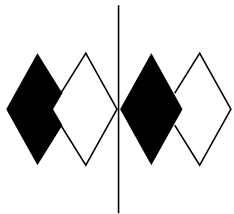
PLANE : 0-DEG 90-DEG

SPACING CRITERIA : 1.2 1.4



Checked N. WHITE

Approved R. BEATTIE



itl boulder
THE LIGHT CENTER OF THE INDUSTRY SINCE 1955

INDEPENDENT TESTING LABORATORIES, INC.
3386 LONGHORN ROAD, BOULDER, CO 80302 USA

PHONE: (303)442-1255 • FAX: (303)449-5274 • E-MAIL: itl@itlboulder.com • WEBSITE: www.itlboulder.com

REPORT NUMBER: ITL61274
PREPARED FOR: SCOTT ARCHITECTURAL LIGHTING

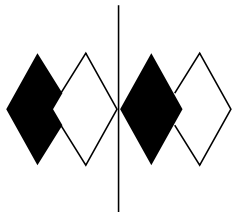
DATE: 11/07/08

CANDELA DISTRIBUTION

	0.0	22.5	45.0	67.5	90.0
0.0	4150	4150	4150	4150	4150
5.0	4131	4137	4138	4140	4142
10.0	4071	4087	4100	4121	4129
15.0	3976	4003	4042	4085	4101
20.0	3848	3890	3961	4031	4056
25.0	3681	3742	3851	3954	3989
30.0	3466	3551	3698	3839	3881
35.0	3195	3303	3493	3660	3709
40.0	2871	3000	3211	3413	3471
45.0	2509	2669	2876	3087	3158
50.0	2111	2271	2456	2659	2734
55.0	1708	1812	1916	2097	2194
60.0	1351	1369	1403	1552	1633
65.0	1070	1072	1097	1194	1246
70.0	850	876	921	975	978
75.0	679	723	782	825	799
80.0	517	561	603	663	660
85.0	368	404	433	488	508
90.0	249	273	316	340	353
95.0	169	180	225	217	240
100.0	129	136	151	148	153
105.0	134	143	143	153	149
110.0	159	172	173	186	179
115.0	189	204	208	229	225
120.0	221	237	246	268	266
125.0	256	271	289	314	312
130.0	291	303	324	357	355
135.0	326	338	358	392	400
140.0	361	375	391	419	426
145.0	396	411	422	446	450
150.0	425	443	445	470	474
155.0	453	471	470	483	484
160.0	472	484	490	496	500
165.0	484	494	504	510	509
170.0	498	505	511	519	521
175.0	509	513	514	517	518
180.0	515	515	515	515	515

ZONAL LUMEN SUMMARY

0- 5	99.
5- 10	295.
10- 15	483.
15- 20	660.
20- 25	819.
25- 30	955.
30- 35	1058.
35- 40	1116.
40- 45	1126.
45- 50	1082.
50- 55	961.
55- 60	776.
60- 65	620.
65- 70	515.
70- 75	440.
75- 80	367.
80- 85	282.
85- 90	204.
90- 95	136.
95-100	92.
100-105	74.
105-110	83.
110-115	98.
115-120	112.
120-125	124.
125-130	134.
130-135	140.
135-140	140.
140-145	137.
145-150	129.
150-155	117.
155-160	101.
160-165	82.
165-170	60.
170-175	37.
175-180	12.



itl boulder
THE LIGHT CENTER OF THE INDUSTRY SINCE 1955

INDEPENDENT TESTING LABORATORIES, INC.
3386 LONGHORN ROAD, BOULDER, CO 80302 USA

PHONE: (303)442-1255 • FAX: (303)449-5274 • E-MAIL: itl@itlboulder.com • WEBSITE: www.itlboulder.com

REPORT NUMBER: ITL61274

DATE: 11/07/08

PREPARED FOR: SCOTT ARCHITECTURAL LIGHTING

COEFFICIENTS OF UTILIZATION - ZONAL CAVITY METHOD

EFFECTIVE FLOOR CAVITY REFLECTANCE 0.20

RC	80				70				50			30			10			0
RW	70	50	30	10	70	50	30	10	50	30	10	50	30	10	50	30	10	0
0	80	80	80	80	77	77	77	77	72	72	72	67	67	67	62	62	62	60
1	73	69	66	64	70	67	64	62	62	60	58	58	56	55	54	53	52	49
2	66	61	56	52	64	58	54	51	55	51	48	51	48	46	48	45	43	41
3	60	53	48	43	58	52	47	42	48	44	41	45	42	39	42	39	37	35
4	55	47	41	37	53	46	40	36	43	38	35	40	36	33	38	35	32	30
5	51	42	36	32	49	41	35	31	39	34	30	36	32	29	34	31	28	26
6	47	38	32	28	45	37	31	27	35	30	26	33	29	25	31	27	25	23
7	44	35	29	25	42	34	28	24	32	27	23	30	26	23	28	25	22	20
8	41	32	26	22	39	31	25	22	29	24	21	27	23	20	26	22	20	18
9	38	29	23	20	37	28	23	19	27	22	19	25	21	18	24	20	18	16
10	36	27	21	18	34	26	21	18	25	20	17	23	19	17	22	19	16	15

ALL CANDELA, LUMENS, LUMINANCE, COEFFICIENT OF UTILIZATION AND VCP VALUES IN THIS REPORT ARE BASED ON RELATIVE PHOTOMETRY WHICH ASSUMES A BALLAST FACTOR OF 1.000. ANY CALCULATIONS PREPARED FROM THESE DATA SHOULD INCLUDE AN APPROPRIATE BALLAST FACTOR.