



Distribution - Goniophotometer

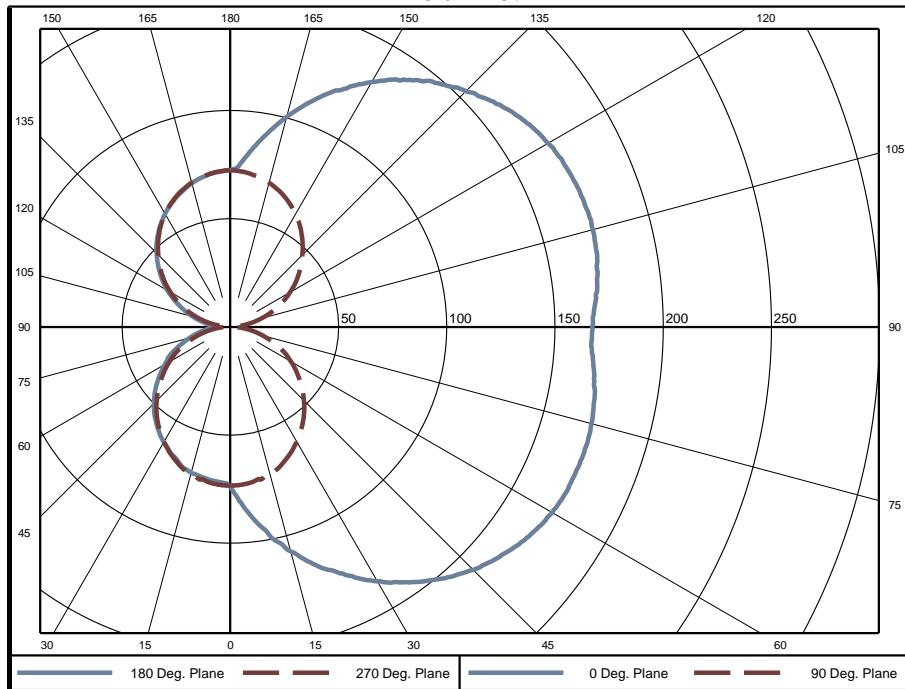
Distribution Test Conditions

Temperature	Voltage	Current	Power	Power Factor	Frequency	Current THD
25.3 °C	120.0 VAC	0.1373 A	16.14 W	0.979	60 Hz	7.81 %

Summary of Results

Spacing Criteria	Total Lumen Output:	891.0 Lumens
0-180: 2.63	Luminaire Efficacy:	55.2 lm/w
90-270: 1.24	Maximum Candela:	174 Candela
Corrected UGR (Room Dimension: X=4H, Y=8H, Reflectances: 70/50/20%, S/H: 1)		
Crosswise: 25.3	Endwise: 7.6	

Polar Plot



Zonal Lumen Summary

Zone	Lumens	% of Luminaire	Zone	Lumens	% of Luminaire	Zone	Lumens	% of Luminaire
0-5	1.80	0.2%	60-65	35.54	4.0%	120-125	34.17	3.8%
5-10	5.55	0.6%	65-70	35.19	3.9%	125-130	33.13	3.7%
10-15	9.52	1.1%	70-75	34.13	3.8%	130-135	31.46	3.5%
15-20	13.56	1.5%	75-80	32.69	3.7%	135-140	29.31	3.3%
20-25	17.45	2.0%	80-85	30.85	3.5%	140-145	26.72	3.0%
25-30	21.19	2.4%	85-90	29.13	3.3%	145-150	23.68	2.7%
30-35	24.68	2.8%	90-95	29.27	3.3%	150-155	20.29	2.3%
35-40	27.82	3.1%	95-100	30.79	3.5%	155-160	16.66	1.9%
40-45	30.50	3.4%	100-105	32.46	3.6%	160-165	12.87	1.4%
45-50	32.64	3.7%	105-110	33.68	3.8%	165-170	9.05	1.0%
50-55	34.18	3.8%	110-115	34.34	3.9%	170-175	5.30	0.6%
55-60	35.14	3.9%	115-120	34.56	3.9%	175-180	1.73	0.2%

Zone	Lumens	% of Luminaire
0-40	122	13.6%
0-60	254	28.5%
0-90	452	50.7%
90-180	439	49.3%



Candela Tabulation
Horizontal Angle (Degrees)

Vertical Angle (Degrees)	0	22.5	45	67.5	90	112.5	135	157.5	180	202.5	225	247.5	270	292.5	315	337.5
	0	73.9	73.9	73.9	73.9	73.9	73.9	73.9	73.9	73.9	73.9	73.9	73.9	73.9	73.9	73.9
	5	85.0	84.5	81.2	76.9	73.1	71.8	71.8	71.9	71.8	71.9	71.8	71.8	73.1	76.9	81.2
	10	95.7	94.3	88.2	79.8	71.7	70.2	70.3	70.7	70.9	70.7	70.3	70.2	71.7	79.8	88.2
	15	107.3	104.6	95.7	83.3	70.9	69.3	69.7	70.1	69.8	70.1	69.7	69.3	70.9	83.3	95.7
	20	117.4	113.6	101.6	84.9	68.3	66.8	67.6	68.0	67.7	68.0	67.6	66.8	68.3	84.9	101.6
	25	126.5	121.4	106.7	85.8	65.0	63.8	64.8	65.3	64.7	65.3	64.8	63.8	65.0	85.8	106.7
	30	135.7	129.1	111.4	86.3	61.4	60.5	61.5	62.1	61.6	62.1	61.5	60.5	61.4	86.3	111.4
	35	144.1	136.5	115.5	86.2	57.4	56.7	57.8	58.5	58.0	58.5	57.8	56.7	57.4	86.2	115.5
	40	151.8	142.8	118.8	85.6	53.0	52.6	53.6	54.4	54.3	54.4	53.6	52.6	53.0	85.6	118.8
	45	158.8	148.2	121.4	84.4	48.2	48.0	49.0	50.1	49.9	50.1	49.0	48.0	48.2	84.4	121.4
	50	163.8	152.8	122.7	82.5	43.1	43.1	44.3	45.2	45.1	45.2	44.3	43.1	43.1	82.5	122.7
	55	168.6	156.1	123.8	80.1	37.8	37.9	39.0	40.1	40.1	40.1	39.0	37.9	37.8	80.1	123.8
	60	171.7	158.5	123.7	77.3	32.5	32.5	33.7	34.9	35.0	34.9	33.7	32.5	32.5	77.3	123.7
	65	172.9	159.7	123.3	74.1	27.3	27.5	28.6	29.9	30.4	29.9	28.6	27.5	27.3	74.1	123.3
	70	173.4	159.2	121.1	69.8	21.2	21.6	22.9	24.2	24.4	24.2	22.9	21.6	21.2	69.8	121.1
	75	172.8	157.8	118.8	65.4	15.4	16.0	17.3	18.8	19.2	18.8	17.3	16.0	15.4	65.4	118.8
	80	171.1	155.6	115.8	60.9	9.8	10.8	12.2	13.9	14.3	13.9	12.2	10.8	9.8	60.9	115.8
	85	168.1	152.5	112.1	56.3	4.5	5.8	7.4	9.6	10.1	9.6	7.4	5.8	4.5	56.3	112.1
	90	167.3	151.5	110.5	53.7	0.9	2.7	5.0	7.0	7.6	7.0	5.0	2.7	0.9	53.7	110.5
	95	169.5	154.9	113.4	56.4	4.4	5.1	6.4	8.6	9.6	8.6	6.4	5.1	4.4	56.4	113.4
	100	172.2	157.1	116.6	60.4	9.6	10.0	10.8	12.0	13.1	12.0	10.8	10.0	9.6	60.4	116.6
	105	173.4	158.7	119.2	64.4	15.1	15.2	15.8	16.9	17.9	16.9	15.8	15.2	15.1	64.4	119.2
	110	173.4	158.7	120.5	67.9	20.7	20.5	21.0	21.8	22.9	21.8	21.0	20.5	20.7	67.9	120.5
	115	172.0	157.8	121.1	71.1	26.4	26.0	26.4	27.1	28.1	27.1	26.4	26.0	26.4	71.1	121.1
	120	169.6	155.9	121.6	74.1	32.0	31.3	31.8	32.5	33.5	32.5	31.8	31.3	32.0	74.1	121.6
	125	166.0	153.0	120.3	76.4	37.4	36.7	37.1	37.7	38.6	37.7	37.1	36.7	37.4	76.4	120.3
	130	160.4	148.5	119.4	78.1	42.3	41.8	42.2	42.7	43.4	42.7	42.2	41.8	42.3	78.1	119.4
	135	154.0	142.7	116.7	79.3	47.1	46.7	46.9	47.5	48.2	47.5	46.9	46.7	47.1	79.3	116.7
	140	147.2	136.7	113.5	80.2	51.9	51.4	51.6	52.2	52.6	52.2	51.6	51.4	51.9	80.2	113.5
	145	139.5	130.0	109.8	80.5	56.3	55.8	56.1	56.3	56.6	56.3	56.1	55.8	56.3	80.5	109.8
	150	130.6	122.2	105.2	80.2	60.2	59.6	59.8	60.1	60.3	60.1	59.8	59.6	60.2	80.2	105.2
	155	120.7	114.3	99.9	79.4	63.7	62.9	63.2	63.3	63.4	63.3	63.2	62.9	63.7	79.4	99.9
	160	111.1	105.2	94.1	77.9	66.6	65.7	66.1	66.1	66.1	66.1	66.1	65.7	66.6	77.9	94.1
	165	100.3	95.9	87.8	75.9	68.9	68.1	68.3	68.3	68.6	68.3	68.3	68.1	68.9	75.9	87.8
	170	89.2	86.0	81.0	73.5	70.6	69.8	69.9	70.0	70.4	70.0	69.9	69.8	70.6	81.0	86.0
	175	78.4	76.3	74.5	72.2	71.8	71.2	71.3	71.3	71.6	71.3	71.3	71.2	71.8	72.2	74.5
	180	72.3	72.3	72.3	72.3	72.3	72.3	72.3	72.3	72.3	72.3	72.3	72.3	72.3	72.3	72.3

Average Luminance (cd/m²)

Vertical Angle (Degrees)	Horizontal Angle (Degrees)		
	0	45	90
	0	2385	2385
	45	3107	1760
	55	3267	1570
	65	3424	1356
	75	3607	991
	85	3836	432



Coefficients of Utilization - Zonal Cavity Method

Effective Floor Cavity Reflectance 20%																		
Ceiling Cavity Reflectance	80				70				50			30			10			0
Wall Reflectance	70	50	30	10	70	50	30	10	50	30	10	50	30	10	50	30	10	0
Room Cavity Ratio (RCR)	** Values are expressed as percent of total lumen output delivered to the task surface **																	
0	107	107	107	107	99	99	99	99	84	84	84	70	70	70	57	57	57	51
1	95	89	84	79	87	82	77	73	68	65	62	56	54	51	45	43	41	36
2	85	76	68	62	78	70	63	57	58	53	49	47	44	40	38	35	32	27
3	77	65	57	50	70	60	53	46	50	44	39	41	36	33	32	29	26	22
4	70	57	48	41	63	53	45	38	44	38	33	36	31	27	28	25	22	18
5	64	51	41	35	58	46	38	32	39	32	27	32	27	23	25	21	18	15
6	58	45	36	30	53	41	33	28	35	28	24	28	23	20	22	19	16	13
7	54	40	32	26	49	37	29	24	31	25	20	26	21	17	20	16	14	11
8	50	36	28	22	45	34	26	21	28	22	18	23	18	15	19	15	12	9
9	46	33	25	20	42	31	23	18	26	20	16	21	17	13	17	13	11	8
10	43	30	23	17	39	28	21	16	24	18	14	20	15	12	16	12	9	7

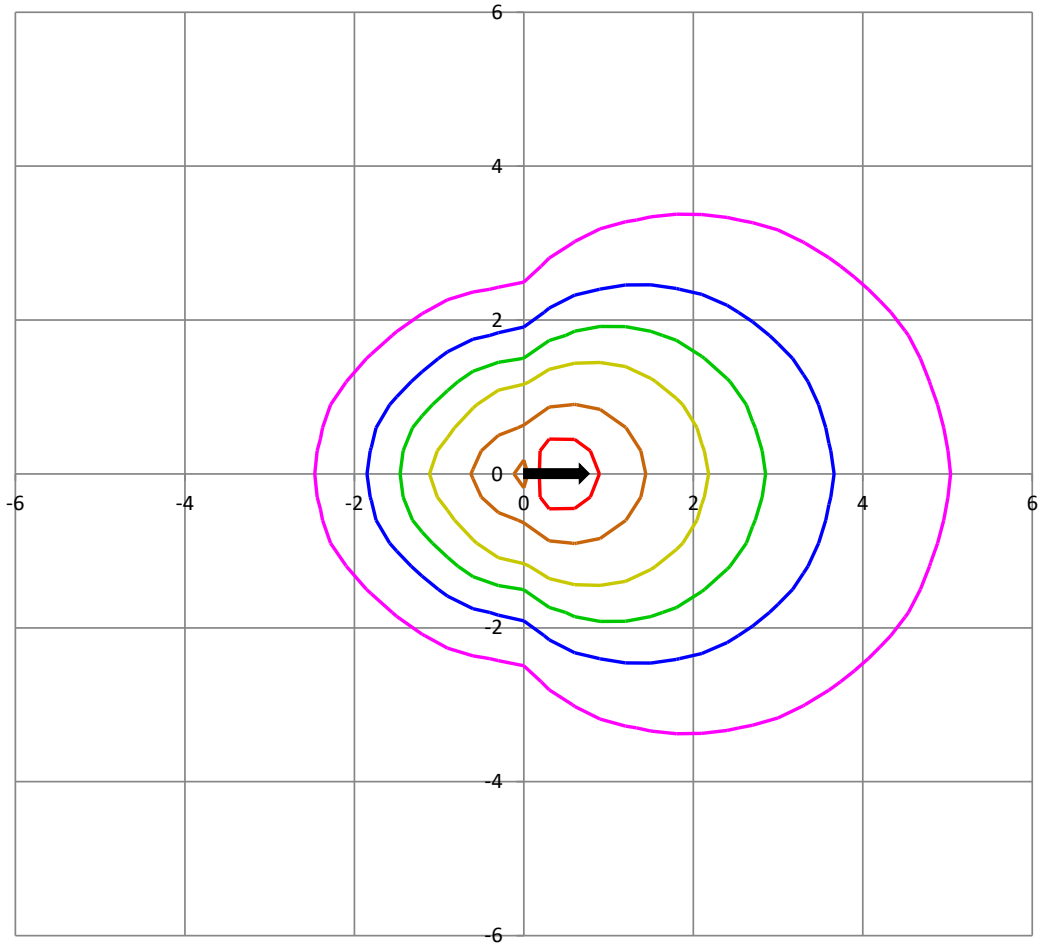
Beam and Field Information	
CIE Type:	Direct/Indirect
Center Beam Intensity:	73.9 Candela
Central Cone Intensity:	#REF! Candela
Beam Flux:	817.7 Lumens
Beam Angle (0-180):	#REF! Degrees
Beam Angle (90-270):	111.8 Degrees
Field Angle (0-180):	#REF! Degrees
Field Angle (90-270):	164.5 Degrees

Cone of Light Tabulation			
Mounting Height (Feet)		Footcandles at Nadir	Diameter (Feet)
4.00		4.62	6.76
6.00		2.05	10.1
8.00		1.15	13.5
10.0		0.739	16.9
12.0		0.513	20.3
14.0		0.377	23.7
16.0		0.289	27.1



ISOFootcandle Plot

Mounting Height - 8 Feet



Grid Lines in Units of Mounting Height

