



Distribution - Goniophotometer

Distribution Test Conditions

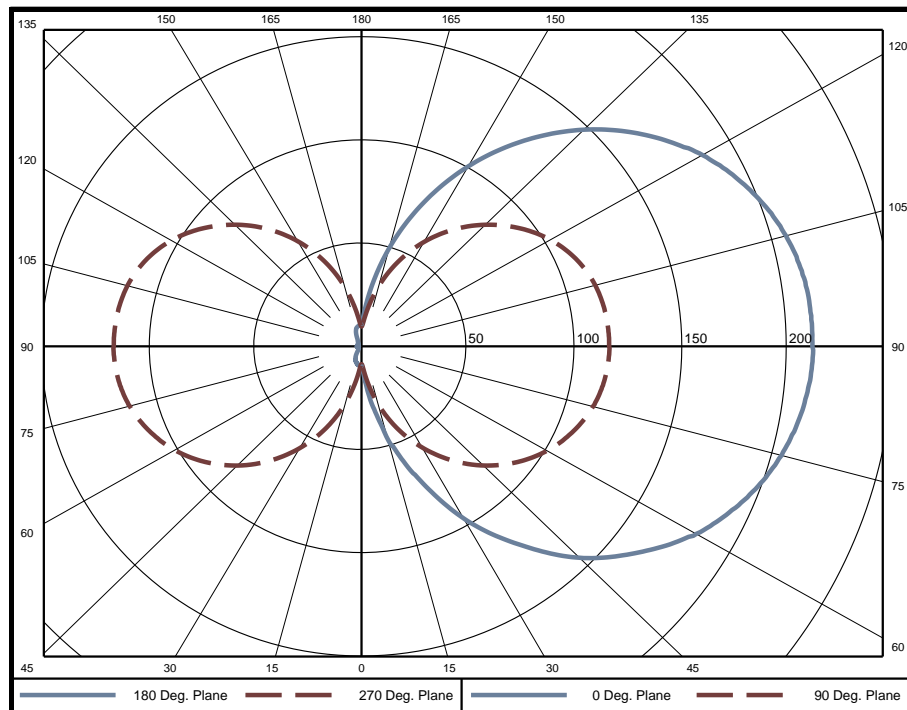
Temperature	Voltage	Current	Power	Power Factor	Frequency	Current THD
24.8 °C	120.0 VAC	0.1226 A	14.56 W	0.989	60 Hz	8.40 %

Summary of Results

Spacing Criteria
 0-180: 6.89
 90-270: 5.48

Total Lumen Output: 1041 Lumens
Luminaire Efficacy: 71.5 lm/w
Maximum Candela: 212 Candela

Polar Plot



Zonal Lumen Summary

Zone	Lumens	% of Luminaire	Zone	Lumens	% of Luminaire	Zone	Lumens	% of Luminaire
0-5	0.25	0.0%	60-65	45.29	4.4%	120-125	41.60	4.0%
5-10	1.10	0.1%	65-70	49.16	4.7%	125-130	36.73	3.5%
10-15	2.68	0.3%	70-75	52.46	5.0%	130-135	31.64	3.0%
15-20	5.09	0.5%	75-80	55.01	5.3%	135-140	26.53	2.5%
20-25	8.23	0.8%	80-85	56.70	5.4%	140-145	21.49	2.1%
25-30	12.02	1.2%	85-90	57.57	5.5%	145-150	16.70	1.6%
30-35	16.34	1.6%	90-95	57.61	5.5%	150-155	12.30	1.2%
35-40	21.05	2.0%	95-100	56.91	5.5%	155-160	8.45	0.8%
40-45	26.06	2.5%	100-105	55.43	5.3%	160-165	5.26	0.5%
45-50	31.13	3.0%	105-110	53.11	5.1%	165-170	2.80	0.3%
50-55	36.11	3.5%	110-115	49.95	4.8%	170-175	1.16	0.1%
55-60	40.88	3.9%	115-120	46.07	4.4%	175-180	0.27	0.0%

Zone	Lumens	% of Luminaire
0-40	67	6.4%
0-60	201	19.3%
0-90	517	49.7%
90-180	524	50.3%



Candela Tabulation

Horizontal Angle (Degrees)

Vertical Angle (Degrees)	0	22.5	45	67.5	90	112.5	135	157.5	180	202.5	225	247.5	270	292.5	315	337.5
	0	8.8	8.8	8.8	8.8	8.8	8.8	8.8	8.8	8.8	8.8	8.8	8.8	8.8	8.8	8.8
	5	15.7	15.6	14.4	13.2	11.6	9.8	8.6	8.9	9.4	8.9	8.6	9.8	11.6	13.2	14.4
	10	28.7	28.7	27.0	24.0	18.9	12.7	8.2	8.5	9.2	8.5	8.2	12.7	18.9	24.0	27.0
	15	45.4	44.8	42.5	37.1	28.1	16.9	8.0	8.0	8.5	8.0	8.0	16.9	28.1	37.1	42.5
	20	60.9	61.9	58.7	50.6	37.8	21.2	7.4	7.2	7.6	7.2	7.4	21.2	37.8	50.6	58.7
	25	77.8	79.2	74.7	64.1	47.4	25.6	6.8	6.3	6.4	6.3	6.8	25.6	47.4	64.1	74.7
	30	96.5	96.3	90.2	76.9	56.6	29.9	6.2	5.1	4.9	5.1	6.2	29.9	56.6	76.9	90.2
	35	112.9	112.8	105.1	89.4	65.5	34.0	5.5	3.7	3.1	3.7	5.5	34.0	65.5	89.4	105.1
	40	129.0	128.5	119.3	101.1	73.9	37.9	4.8	2.9	2.3	2.9	4.8	37.9	73.9	101.1	119.3
	45	144.8	143.1	132.4	111.9	81.7	41.5	4.1	2.3	1.8	2.3	4.1	41.5	81.7	111.9	132.4
	50	157.9	156.4	144.3	121.6	88.8	44.7	3.5	1.7	1.6	1.7	3.5	44.7	88.8	121.6	144.3
	55	170.1	168.4	155.0	130.5	95.2	47.6	2.9	1.2	1.5	1.2	2.9	47.6	95.2	130.5	155.0
	60	181.6	178.9	164.3	138.0	100.7	50.2	2.4	1.0	1.6	1.0	2.4	50.2	100.7	138.0	164.3
	65	190.5	188.0	172.0	144.5	105.3	52.4	2.3	1.1	1.6	1.1	2.3	52.4	105.3	144.5	172.0
	70	198.1	195.0	178.8	149.8	109.2	54.2	2.5	1.2	1.7	1.2	2.5	54.2	109.2	149.8	178.8
	75	204.2	200.7	184.2	154.0	112.2	55.9	2.7	1.3	1.8	1.3	2.7	55.9	112.2	154.0	184.2
	80	208.2	204.4	187.6	156.8	114.3	57.0	2.8	1.4	1.9	1.4	2.8	57.0	114.3	156.8	187.6
	85	211.0	206.7	189.7	158.4	115.5	57.7	2.9	1.4	1.9	1.4	2.9	57.7	115.5	158.4	189.7
	90	211.7	207.5	190.5	159.0	115.8	58.0	2.9	1.4	1.9	1.4	2.9	58.0	115.8	159.0	190.5
	95	211.4	207.2	190.1	158.7	115.6	57.8	2.9	1.4	2.0	1.4	2.9	57.8	115.6	158.7	190.1
	100	209.9	205.5	188.8	157.6	114.8	57.4	2.9	1.4	1.9	1.4	2.9	57.4	114.8	157.6	188.8
	105	206.4	202.4	186.0	155.4	113.3	56.5	2.8	1.3	1.9	1.3	2.8	56.5	113.3	155.4	186.0
	110	200.9	197.6	181.3	151.9	110.8	55.2	2.7	1.2	1.8	1.2	2.7	55.2	110.8	151.9	181.3
	115	193.7	190.8	175.0	146.9	107.2	53.4	2.5	1.1	1.7	1.1	2.5	53.4	107.2	146.9	175.0
	120	185.0	181.7	167.2	140.4	102.6	51.3	2.6	1.0	1.6	1.0	2.6	51.3	102.6	140.4	167.2
	125	174.0	170.7	157.5	132.6	96.9	48.7	3.1	1.1	1.5	1.1	3.1	48.7	96.9	132.6	157.5
	130	161.9	158.3	146.4	123.4	90.4	45.8	3.8	1.7	1.6	1.7	3.8	45.8	90.4	123.4	146.4
	135	148.4	144.6	134.1	113.5	83.3	42.5	4.5	2.3	1.9	2.3	4.5	42.5	83.3	113.5	134.1
	140	133.4	130.0	121.0	102.7	75.5	39.0	5.3	3.0	2.4	3.0	5.3	39.0	75.5	102.7	121.0
	145	117.5	114.3	106.8	91.1	67.2	35.2	6.0	3.7	2.9	3.7	6.0	35.2	67.2	91.1	106.8
	150	100.8	97.8	91.8	78.7	58.3	31.0	6.7	4.3	3.4	4.3	6.7	31.0	58.3	78.7	91.8
	155	83.4	80.6	76.1	65.6	48.9	26.7	7.3	5.3	4.9	5.3	7.3	26.7	48.9	65.6	76.1
	160	65.7	63.1	59.9	52.0	39.1	22.2	8.0	6.9	7.2	6.9	8.0	22.2	39.1	52.0	59.9
	165	48.2	45.8	43.6	38.1	29.2	17.9	8.6	8.4	9.0	8.4	8.6	17.9	29.2	38.1	43.6
	170	31.5	29.3	27.9	24.9	20.0	13.9	9.1	9.1	9.7	9.1	9.1	13.9	20.0	24.9	27.9
	175	17.8	16.1	15.2	14.2	12.6	10.8	9.4	9.7	10.2	9.7	9.4	10.8	12.6	14.2	15.2
	180	9.9	9.9	9.9	9.9	9.9	9.9	9.9	9.9	9.9	9.9	9.9	9.9	9.9	9.9	9.9

Average Luminance (cd/m²)

Horizontal Angle (Degrees)

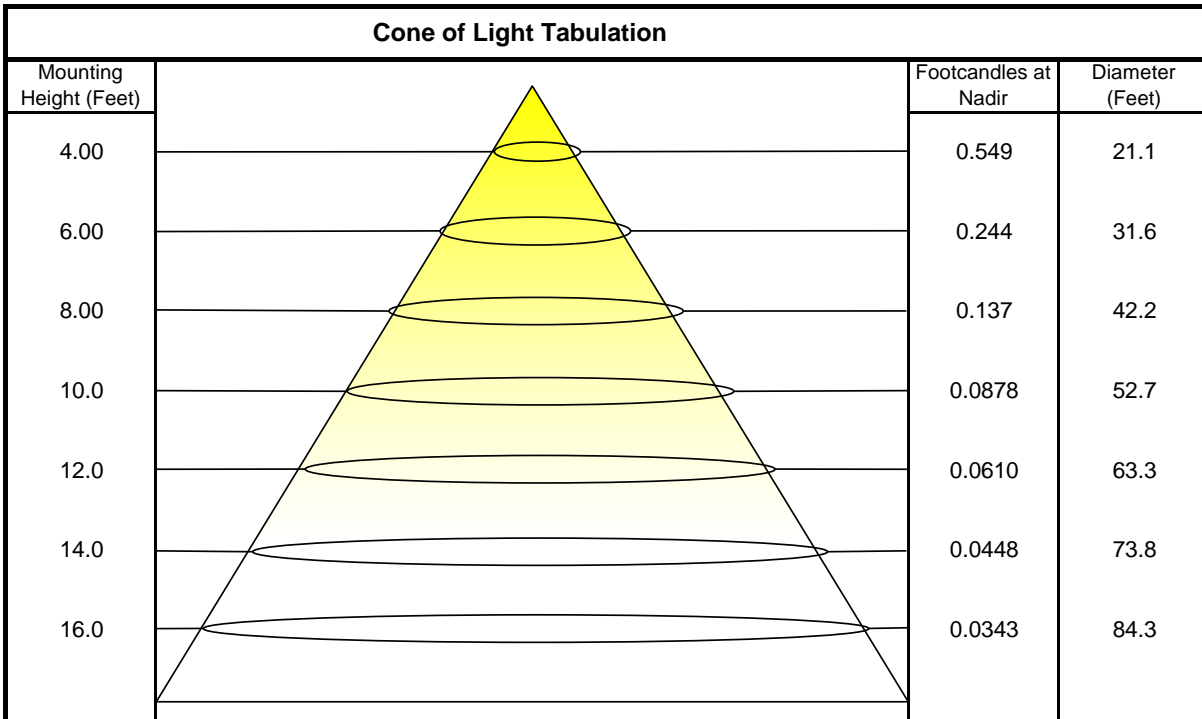
Vertical Angle (Degrees)	0	45	90
	0	1944	1944
	45	3488	3258
	55	3620	3404
	65	3733	3513
	75	3815	3609
	85	3879	3696



Coefficients of Utilization - Zonal Cavity Method

Effective Floor Cavity Reflectance 20%																		
Ceiling Cavity Reflectance	80				70				50			30			10			0
Wall Reflectance	70	50	30	10	70	50	30	10	50	30	10	50	30	10	50	30	10	0
Room Cavity Ratio (RCR)	** Values are expressed as percent of total lumen output delivered to the task surface **																	
0	107	107	107	107	99	99	99	99	83	83	83	69	69	69	56	56	56	50
1	92	85	79	74	84	78	73	68	64	60	57	52	49	46	40	38	36	30
2	82	71	63	56	74	65	58	51	53	48	42	42	38	34	32	29	26	21
3	73	61	52	44	66	55	47	40	45	39	33	36	31	26	27	23	20	15
4	66	53	43	36	60	48	39	33	39	32	27	31	25	21	23	19	16	12
5	60	46	37	29	54	42	33	27	34	27	22	27	22	17	20	16	13	9
6	55	41	31	25	50	37	29	23	30	24	18	24	19	14	18	14	10	7
7	51	37	27	21	46	33	25	19	27	21	16	21	16	12	16	12	9	6
8	47	33	24	18	42	30	22	17	24	18	13	19	14	10	15	11	7	5
9	43	30	21	16	39	27	20	14	22	16	12	18	13	9	13	9	6	4
10	40	27	19	14	37	25	17	13	20	14	10	16	11	8	12	8	6	4

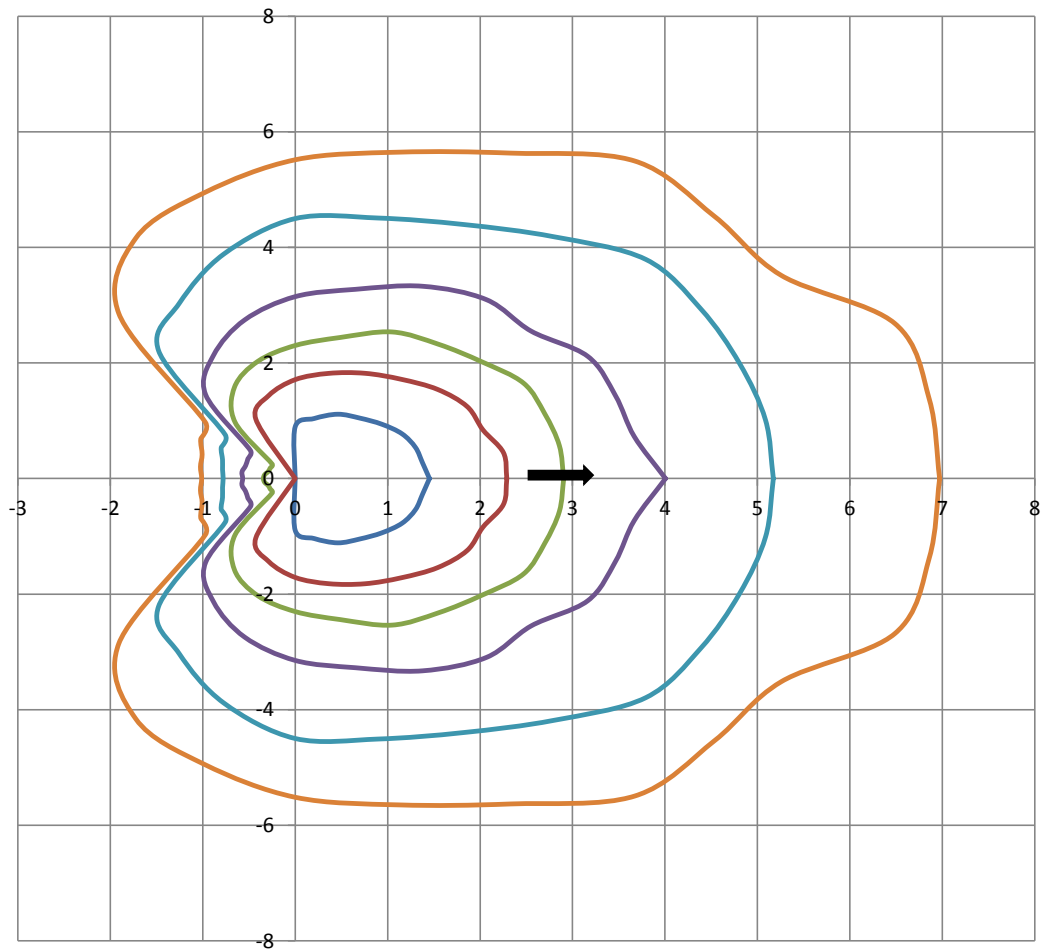
Beam and Field Information	
CIE Type:	Direct/Indirect
Center Beam Intensity:	8.8 Candela
Central Cone Intensity:	10 Candela
Beam Flux:	1034.3 Lumens
Beam Angle (0-180):	N/A Degrees
Beam Angle (90-270):	N/A Degrees
Field Angle (0-180):	N/A Degrees
Field Angle (90-270):	N/A Degrees





ISOFootcandle Plot

Mounting Height - 8 Feet



Grid Lines in Units of Mounting Height

— 0.5 fc — 0.2 fc — 0.1 fc — 0.05 fc — 0.02 fc — 0.01 fc