

Distribution - Goniophotometer

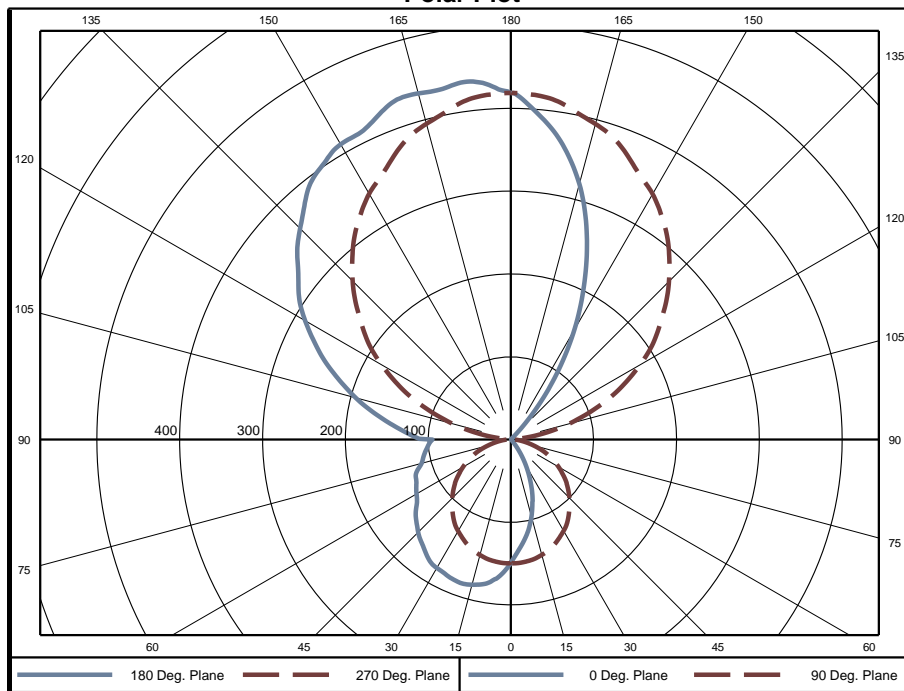
Distribution Test Conditions

Temperature	Voltage	Current	Power	Power Factor	Frequency	Current THD
25.8 °C	120.0 VAC	0.1793 A	20.68 W	0.961	60 Hz	10.5 %

Summary of Results

Spacing Criteria 0-180: 0.63 90-270: 1.28 Corrected UGR (Room Dimension: X=4H, Y=8H, Reflectances: 70/50/20%, S/H: 1) Crosswise: 0	Total Lumen Output: 1509 Lumens Luminaire Efficacy: 73.0 lm/w Maximum Candela: 436 Candela Endwise: 12.1
--	--

Polar Plot



Zonal Lumen Summary

Zone	Lumens	% of Luminaire	Zone	Lumens	% of Luminaire	Zone	Lumens	% of Luminaire
0-5	3.55	0.2%	60-65	28.20	1.9%	120-125	72.39	4.8%
5-10	10.52	0.7%	65-70	26.45	1.8%	125-130	77.91	5.2%
10-15	17.03	1.1%	70-75	24.35	1.6%	130-135	83.38	5.5%
15-20	22.70	1.5%	75-80	22.00	1.5%	135-140	87.85	5.8%
20-25	27.28	1.8%	80-85	20.28	1.3%	140-145	90.24	6.0%
25-30	30.59	2.0%	85-90	18.91	1.3%	145-150	88.66	5.9%
30-35	32.81	2.2%	90-95	21.60	1.4%	150-155	82.90	5.5%
35-40	33.51	2.2%	95-100	28.83	1.9%	155-160	74.26	4.9%
40-45	33.40	2.2%	100-105	37.84	2.5%	160-165	62.44	4.1%
45-50	32.84	2.2%	105-110	46.99	3.1%	165-170	46.87	3.1%
50-55	31.80	2.1%	110-115	56.20	3.7%	170-175	29.34	1.9%
55-60	30.05	2.0%	115-120	64.89	4.3%	175-180	9.96	0.7%

Zone	Lumens	% of Luminaire
0-40	178	11.8%
0-60	306	20.3%
0-90	446	29.6%
90-180	1063	70.4%



Candela Tabulation
Horizontal Angle (Degrees)

	0	22.5	45	67.5	90	112.5	135	157.5	180	202.5	225	247.5	270	292.5	315	337.5
0	148.5	148.5	148.5	148.5	148.5	148.5	148.5	148.5	148.5	148.5	148.5	148.5	148.5	148.5	148.5	148.5
5	131.0	131.3	136.0	142.6	149.4	155.1	159.6	162.2	166.2	162.2	159.6	155.1	149.4	142.6	136.0	131.3
10	114.9	114.7	122.8	134.8	147.8	159.7	168.7	173.7	176.7	173.7	168.7	159.7	147.8	134.8	122.8	114.7
15	96.5	96.9	107.9	125.1	144.5	162.6	173.6	178.8	181.3	178.8	173.6	162.6	144.5	125.1	107.9	96.9
20	76.9	78.7	92.3	114.4	140.2	163.0	175.3	181.1	183.3	181.1	175.3	163.0	140.2	114.4	92.3	78.7
25	56.2	59.7	76.7	102.6	134.2	160.7	173.4	180.0	181.3	180.0	173.4	160.7	134.2	102.6	76.7	59.7
30	36.6	40.6	60.2	90.5	127.6	156.8	170.2	177.5	179.0	177.5	170.2	156.8	127.6	90.5	60.2	40.6
35	18.5	22.9	43.6	78.0	119.8	150.6	164.9	173.0	174.3	173.0	164.9	150.6	119.8	78.0	43.6	22.9
40	5.5	8.5	27.6	64.7	110.0	142.0	156.8	165.3	165.9	165.3	156.8	142.0	110.0	64.7	27.6	8.5
45	1.7	2.2	13.4	51.1	100.1	132.8	148.2	157.3	158.2	157.3	148.2	132.8	100.1	51.1	13.4	2.2
50	1.5	1.6	4.2	37.7	89.5	122.3	138.3	148.3	149.4	148.3	138.3	122.3	89.5	37.7	4.2	1.6
55	1.4	1.6	1.7	24.9	78.3	110.5	127.3	137.8	138.9	137.8	127.3	110.5	78.3	24.9	1.7	1.6
60	1.4	1.6	1.7	13.1	66.5	98.1	115.4	127.8	131.4	127.8	115.4	98.1	66.5	13.1	1.7	1.6
65	1.4	1.6	1.7	5.1	54.3	86.0	104.3	121.9	125.8	121.9	104.3	86.0	54.3	5.1	1.7	1.6
70	1.4	1.5	1.7	2.3	41.8	75.0	97.9	116.3	122.0	116.3	97.9	75.0	41.8	2.3	1.7	1.5
75	1.3	1.4	1.6	2.0	28.0	60.8	88.7	107.9	111.7	107.9	88.7	60.8	28.0	2.0	1.6	1.4
80	1.2	1.2	1.5	1.8	16.2	51.0	84.1	103.4	106.4	103.4	84.1	51.0	16.2	1.8	1.5	1.2
85	1.1	1.2	1.4	1.7	6.9	44.0	80.4	99.0	100.9	99.0	80.4	44.0	6.9	1.7	1.4	1.2
90	0.9	1.1	1.3	1.5	3.2	41.0	78.2	94.2	94.6	94.2	78.2	41.0	3.2	1.5	1.3	1.1
95	0.6	0.6	0.6	1.6	11.5	57.9	101.1	123.0	132.6	123.0	101.1	57.9	11.5	1.6	0.6	0.6
100	0.5	0.5	0.6	4.5	39.0	85.7	128.3	150.9	161.5	150.9	128.3	85.7	39.0	4.5	0.6	0.5
105	0.5	0.5	0.6	7.8	73.6	120.9	160.1	182.0	193.5	182.0	160.1	120.9	73.6	7.8	0.6	0.5
110	0.5	0.5	0.7	12.7	108.9	158.5	193.1	213.1	224.9	213.1	193.1	158.5	108.9	12.7	0.7	0.5
115	0.5	0.5	0.8	34.6	145.8	196.5	226.0	245.3	256.6	245.3	226.0	196.5	145.8	34.6	0.8	0.5
120	0.5	0.6	0.9	71.6	180.4	230.7	256.9	275.6	286.7	275.6	256.9	230.7	180.4	71.6	0.9	0.6
125	0.6	0.7	8.0	111.6	213.1	262.6	287.2	302.8	312.9	302.8	287.2	262.6	213.1	111.6	8.0	0.7
130	0.7	3.2	42.7	151.0	241.4	289.7	313.3	326.7	336.2	326.7	313.3	289.7	241.4	151.0	42.7	3.2
135	8.0	26.2	88.7	190.8	270.2	317.3	339.9	352.9	359.9	352.9	339.9	317.3	270.2	190.8	88.7	26.2
140	43.8	74.3	138.2	229.5	297.2	342.1	363.9	376.1	384.1	376.1	363.9	342.1	297.2	229.5	138.2	74.3
145	96.8	127.1	186.2	264.9	321.0	362.1	384.0	395.1	400.6	395.1	384.0	362.1	321.0	264.9	186.2	127.1
150	154.5	181.6	231.7	296.5	342.3	379.9	401.0	410.7	411.4	410.7	401.0	379.9	342.3	296.5	231.7	181.6
155	211.1	232.0	273.1	323.2	359.1	391.2	410.7	419.4	414.7	419.4	410.7	391.2	359.1	323.2	273.1	232.0
160	267.9	285.4	316.5	353.1	380.3	406.4	424.5	432.6	430.0	432.6	424.5	406.4	380.3	353.1	316.5	285.4
165	319.6	330.2	350.0	375.0	394.3	413.8	429.2	435.7	432.7	435.7	429.2	413.8	394.3	375.0	350.0	330.2
170	361.3	369.6	380.5	395.6	406.7	419.4	428.3	433.1	432.7	433.1	428.3	419.4	406.7	395.6	380.5	369.6
175	393.1	399.7	404.8	412.5	416.0	422.3	426.4	427.8	433.0	427.8	426.4	422.3	416.0	412.5	404.8	399.7
180	418.1	418.1	418.1	418.1	418.1	418.1	418.1	418.1	418.1	418.1	418.1	418.1	418.1	418.1	418.1	418.1

Average Luminance (cd/m²)
Horizontal Angle (Degrees)

	0	45	90
0	9565	9565	9565
45	29	267	4955
55	23	31	3997
65	22	30	2950
75	19	28	1684
85	16	25	482

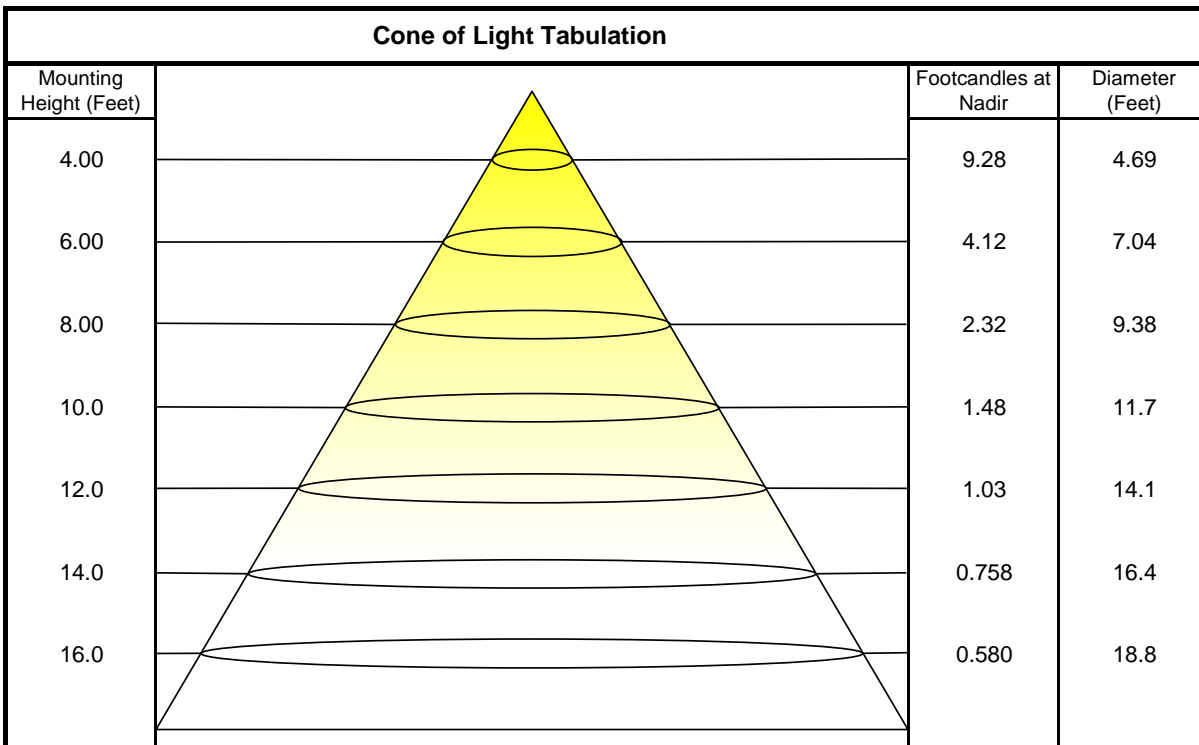


Coefficients of Utilization - Zonal Cavity Method

Effective Floor Cavity Reflectance 20%

Ceiling Cavity Reflectance	80				70				50			30			10			0
Wall Reflectance	70	50	30	10	70	50	30	10	50	30	10	50	30	10	50	30	10	0
Room Cavity Ratio (RCR)	** Values are expressed as percent of total lumen output delivered to the task surface **																	
0	102	102	102	102	92	92	92	92	72	72	72	54	54	54	37	37	37	30
1	92	88	83	80	82	78	75	72	61	59	57	46	44	43	31	30	29	23
2	84	76	70	64	75	68	63	58	53	50	46	40	37	35	27	26	24	19
3	76	67	59	53	68	60	53	48	47	42	39	35	32	29	24	22	20	15
4	69	59	51	45	62	53	46	41	41	37	33	31	28	25	21	19	17	13
5	64	52	44	38	57	47	40	35	37	32	28	28	24	21	19	17	15	11
6	58	47	39	33	52	42	35	30	33	28	24	25	21	19	17	15	13	10
7	54	42	34	29	48	38	31	26	30	25	21	23	19	16	16	13	12	9
8	50	38	30	25	45	34	28	23	27	22	19	21	17	15	14	12	10	8
9	46	34	27	22	41	31	25	20	25	20	17	19	15	13	13	11	9	7
10	43	31	24	20	39	28	22	18	23	18	15	17	14	12	12	10	8	6

Beam and Field Information	
CIE Type:	Semi-Indirect
Center Beam Intensity:	148.5 Candela
Central Cone Intensity:	N/A Candela
Beam Flux:	1427.6 Lumens
Beam Angle (0-180):	N/A Degrees
Beam Angle (90-270):	113.3 Degrees
Field Angle (0-180):	N/A Degrees
Field Angle (90-270):	161.3 Degrees



ISOFootcandle Plot

Mounting Height - 8 Feet

