



## Distribution - Goniophotometer

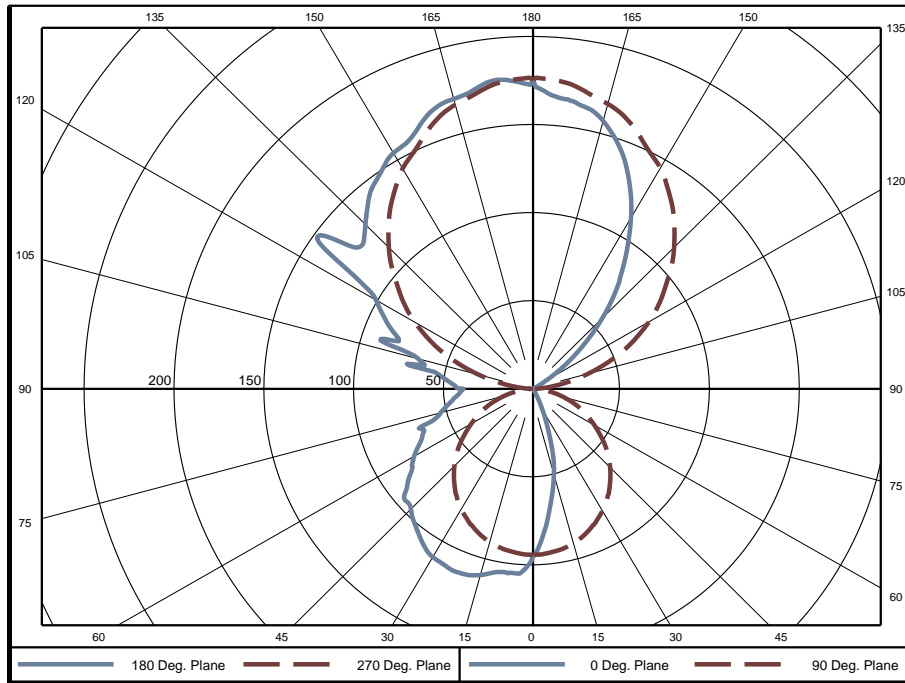
### Distribution Test Conditions

Temperature	Voltage	Current	Power	Power Factor	Frequency	Current THD
24.9 °C	120.0 VAC	0.08389 A	9.545 W	0.948	60 Hz	13.1 %

### Summary of Results

<b>Spacing Criteria</b>	<b>Total Lumen Output:</b>	716.8 Lumens
0-180: 0.48	<b>Luminaire Efficacy:</b>	75.1 lm/w
90-270: 1.24	<b>Maximum Candela:</b>	177 Candela
<b>Corrected UGR (Room Dimension: X=4H, Y=8H, Reflectances: 70/50/20%, S/H: 1)</b>	<b>Endwise:</b>	16.2
<b>Crosswise:</b> 0		

### Polar Plot



### Zonal Lumen Summary

Zone	Lumens	% of Luminaire	Zone	Lumens	% of Luminaire	Zone	Lumens	% of Luminaire
0-5	2.24	0.3%	60-65	16.44	2.3%	120-125	33.63	4.7%
5-10	6.42	0.9%	65-70	14.97	2.1%	125-130	37.27	5.2%
10-15	10.01	1.4%	70-75	13.33	1.9%	130-135	39.05	5.4%
15-20	12.97	1.8%	75-80	11.31	1.6%	135-140	40.67	5.7%
20-25	15.13	2.1%	80-85	9.60	1.3%	140-145	40.89	5.7%
25-30	16.67	2.3%	85-90	8.43	1.2%	145-150	39.56	5.5%
30-35	17.87	2.5%	90-95	8.75	1.2%	150-155	36.55	5.1%
35-40	18.59	2.6%	95-100	11.06	1.5%	155-160	32.31	4.5%
40-45	18.99	2.6%	100-105	14.98	2.1%	160-165	26.84	3.7%
45-50	19.04	2.7%	105-110	19.41	2.7%	165-170	19.91	2.8%
50-55	18.63	2.6%	110-115	22.74	3.2%	170-175	12.32	1.7%
55-60	17.70	2.5%	115-120	28.37	4.0%	175-180	4.17	0.6%

Zone	Lumens	% of Luminaire
0-40	100	13.9%
0-60	174	24.3%
0-90	248	34.6%
90-180	468	65.4%



**Candela Tabulation**  
Horizontal Angle (Degrees)

	0	22.5	45	67.5	90	112.5	135	157.5	180	202.5	225	247.5	270	292.5	315	337.5
0	94.5	94.5	94.5	94.5	94.5	94.5	94.5	94.5	94.5	94.5	94.5	94.5	94.5	94.5	94.5	94.5
5	79.7	77.4	82.8	88.3	93.5	98.8	102.5	103.4	105.1	103.4	102.5	98.8	93.5	88.3	82.8	77.4
10	62.1	60.9	69.1	80.6	92.3	101.8	104.7	105.2	105.4	105.2	104.7	101.8	92.3	80.6	69.1	60.9
15	46.4	45.6	56.3	71.8	90.1	101.9	104.1	107.0	109.2	107.0	104.1	101.9	90.1	71.8	56.3	45.6
20	26.6	27.9	43.5	62.7	87.1	99.5	105.1	109.7	111.8	109.7	105.1	99.5	87.1	62.7	43.5	27.9
25	11.8	13.3	28.8	53.5	83.3	96.1	104.8	109.9	111.7	109.9	104.8	96.1	83.3	53.5	28.8	13.3
30	3.0	4.2	16.2	44.5	78.9	93.1	104.0	108.5	110.4	108.5	104.0	93.1	78.9	44.5	16.2	4.2
35	0.9	0.9	7.2	34.8	73.4	89.6	100.9	105.0	106.6	105.0	100.9	89.6	73.4	34.8	7.2	0.9
40	0.7	0.8	2.2	25.1	67.5	85.4	95.7	100.1	101.2	100.1	95.7	85.4	67.5	25.1	2.2	0.8
45	0.7	0.7	0.9	16.7	61.0	81.1	90.3	94.7	95.7	94.7	90.3	81.1	61.0	16.7	0.9	0.7
50	0.6	0.6	0.8	9.5	54.0	75.9	83.9	89.7	92.7	89.7	83.9	75.9	54.0	9.5	0.8	0.6
55	0.6	0.6	0.8	4.9	46.3	69.0	77.3	82.4	82.3	82.4	77.3	69.0	46.3	4.9	0.8	0.6
60	0.6	0.6	0.8	2.6	38.9	61.7	73.1	74.4	75.9	74.4	73.1	61.7	38.9	2.6	0.8	0.6
65	0.5	0.6	0.8	1.9	31.8	53.9	61.9	66.8	68.2	66.8	61.9	53.9	31.8	1.9	0.8	0.6
70	0.5	0.5	0.8	1.9	24.9	46.3	53.8	60.6	66.2	60.6	53.8	46.3	24.9	1.9	0.8	0.5
75	0.6	0.5	0.8	1.8	17.6	36.5	47.4	52.9	53.0	52.9	47.4	36.5	17.6	1.8	0.8	0.5
80	0.7	0.6	0.9	1.6	10.7	27.3	39.5	47.4	47.0	47.4	39.5	27.3	10.7	1.6	0.9	0.6
85	0.9	0.8	1.0	1.4	4.9	20.8	36.5	43.7	42.0	43.7	36.5	20.8	4.9	1.4	1.0	0.8
90	1.1	1.1	1.1	1.5	2.1	17.2	34.1	40.8	38.4	40.8	34.1	17.2	2.1	1.5	1.1	1.1
95	0.6	0.6	0.7	1.8	5.8	21.9	38.7	47.2	46.7	47.2	38.7	21.9	5.8	1.8	0.7	0.6
100	0.7	0.6	0.7	5.2	16.7	30.9	49.6	56.7	55.3	56.7	49.6	30.9	16.7	5.2	0.7	0.6
105	0.7	0.6	0.8	11.6	30.5	52.9	62.5	66.1	65.7	66.1	62.5	52.9	30.5	11.6	0.8	0.6
110	0.7	0.6	1.4	24.1	45.5	59.5	70.4	78.1	79.0	78.1	70.4	59.5	45.5	24.1	1.4	0.6
115	0.7	0.7	11.6	40.1	60.5	73.0	89.6	88.1	89.2	88.1	89.6	73.0	60.5	40.1	11.6	0.7
120	4.0	10.0	27.9	56.6	74.5	84.8	105.8	100.9	100.2	100.9	105.8	84.8	74.5	56.6	27.9	10.0
125	18.0	26.6	45.9	73.5	87.4	97.6	105.9	139.0	144.4	139.0	105.9	97.6	87.4	73.5	45.9	26.6
130	35.6	44.6	63.5	87.6	99.4	108.5	115.5	120.3	125.2	120.3	115.5	108.5	99.4	87.6	63.5	44.6
135	55.3	63.9	80.4	102.3	111.9	120.2	125.8	129.7	131.2	129.7	125.8	120.2	111.9	102.3	80.4	63.9
140	75.0	81.9	97.3	116.0	123.3	130.7	135.4	139.0	141.3	139.0	135.4	130.7	123.3	116.0	97.3	81.9
145	92.9	99.8	113.9	128.4	133.8	140.4	144.4	147.0	148.2	147.0	144.4	140.4	133.8	128.4	113.9	99.8
150	112.3	117.6	128.9	139.4	143.8	149.6	153.2	155.3	154.4	155.3	153.2	149.6	143.8	139.4	128.9	117.6
155	130.2	132.8	140.6	146.9	151.0	156.1	159.2	161.0	158.0	161.0	159.2	156.1	151.0	146.9	140.6	132.8
160	145.4	147.7	153.3	156.3	160.3	164.7	167.2	168.6	166.8	168.6	167.2	164.7	160.3	156.3	153.3	147.7
165	156.8	158.7	161.0	162.8	166.6	170.0	171.8	172.8	170.2	172.8	171.8	170.0	166.6	162.8	161.0	158.7
170	162.9	164.7	166.0	168.3	171.1	173.3	174.8	175.4	173.8	175.4	174.8	173.3	171.1	168.3	166.0	164.7
175	165.9	169.6	171.6	173.8	175.2	176.3	176.6	176.4	175.9	176.4	176.6	176.3	175.2	173.8	171.6	169.6
180	175.1	175.1	175.1	175.1	175.1	175.1	175.1	175.1	175.1	175.1	175.1	175.1	175.1	175.1	175.1	175.1

**Average Luminance (cd/m<sup>2</sup>)**  
Horizontal Angle (Degrees)

	0	45	90
0	10600	10600	10600
45	59	42	2787
55	51	37	2002
65	53	35	1338
75	61	38	746
85	110	45	216

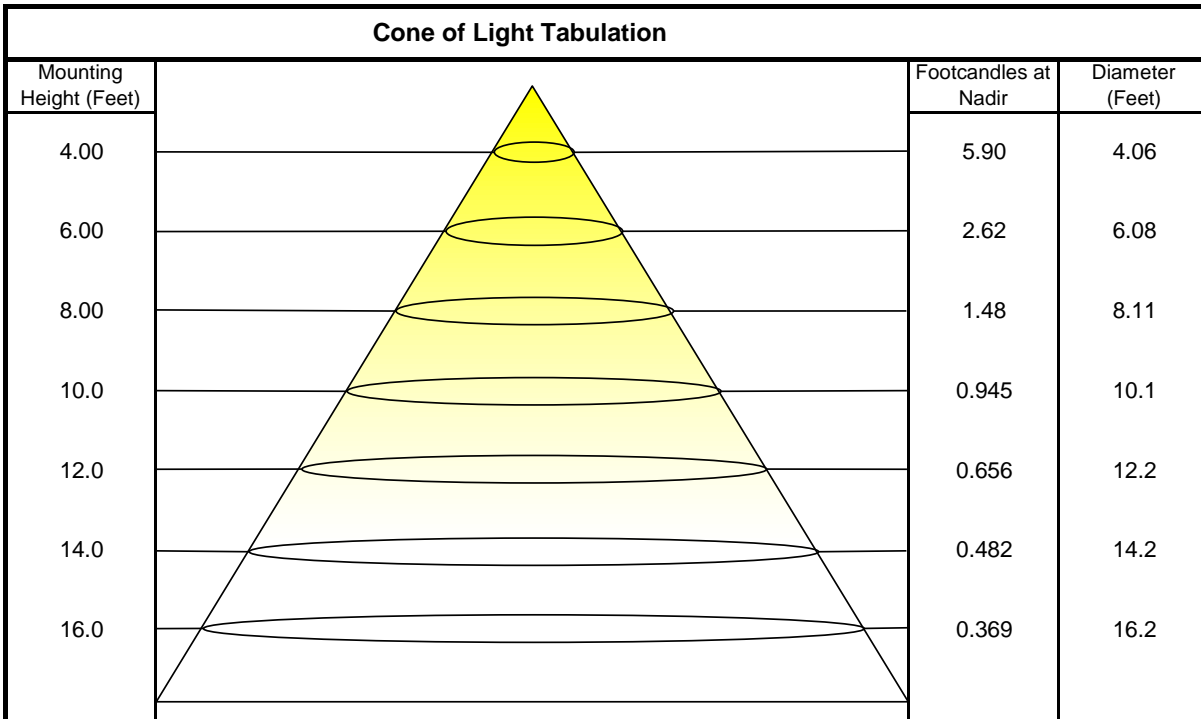


**Coefficients of Utilization - Zonal Cavity Method**

Effective Floor Cavity Reflectance 20%

Ceiling Cavity Reflectance	80				70				50			30			10			0
Wall Reflectance	70	50	30	10	70	50	30	10	50	30	10	50	30	10	50	30	10	0
Room Cavity Ratio (RCR)	** Values are expressed as percent of total lumen output delivered to the task surface **																	
0	103	103	103	103	93	93	93	93	75	75	75	58	58	58	42	42	42	35
1	93	89	85	81	84	80	77	73	64	62	59	49	48	46	36	34	33	27
2	85	77	71	65	76	70	64	60	56	52	48	43	40	38	31	29	28	22
3	77	67	60	54	69	61	55	49	49	44	40	38	34	32	27	25	23	18
4	70	59	51	45	63	54	47	42	43	38	34	33	30	27	24	22	20	16
5	64	53	45	39	58	48	41	35	39	33	29	30	26	23	22	19	17	14
6	59	47	39	33	53	43	36	31	35	29	25	27	23	20	20	17	15	12
7	55	43	35	29	49	39	32	27	31	26	22	24	21	18	18	15	13	10
8	51	38	31	26	46	35	28	24	28	23	20	22	19	16	16	14	12	9
9	47	35	28	23	42	32	25	21	26	21	17	20	17	14	15	13	11	8
10	44	32	25	20	40	29	23	19	24	19	16	19	15	13	14	12	10	8

Beam and Field Information	
CIE Type:	Semi-Indirect
Center Beam Intensity:	94.5 Candela
Central Cone Intensity:	94 Candela
Beam Flux:	636.0 Lumens
Beam Angle (0-180):	94.5 Degrees
Beam Angle (90-270):	108.9 Degrees
Field Angle (0-180):	N/A Degrees
Field Angle (90-270):	161.9 Degrees



### ISOFootcandle Plot

Mounting Height - 8 Feet

