



Distribution - Goniophotometer

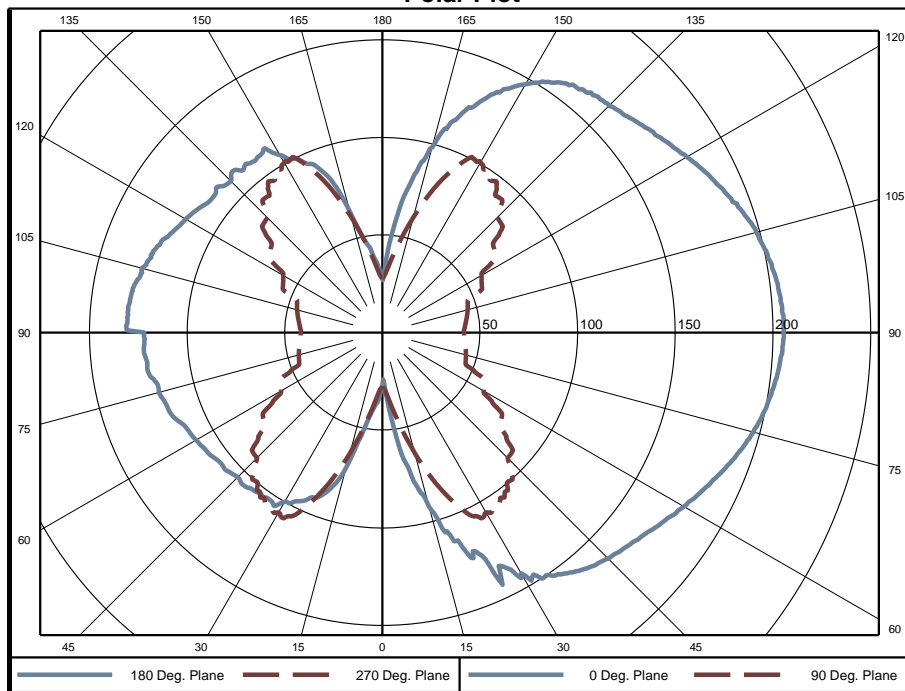
Distribution Test Conditions

Temperature	Voltage	Current	Power	Power Factor	Frequency	Current THD
25.5 °C	120.1 VAC	0.1021 A	11.93 W	0.973	60 Hz	8.34 %

Summary of Results

Spacing Criteria	Total Lumen Output:	1369 Lumens
0-180: 4.32	Luminaire Efficacy:	114.8 lm/w
90-270: 2.89	Maximum Candela:	206 Candela
Corrected UGR (Room Dimension: X=4H, Y=8H, Reflectances: 70/50/20%, S/H: 1)		
Crosswise: 22.1	Endwise: 14.9	

Polar Plot



Zonal Lumen Summary

Zone	Lumens	% of Luminaire	Zone	Lumens	% of Luminaire	Zone	Lumens	% of Luminaire
0-5	0.76	0.1%	60-65	54.03	3.9%	120-125	51.47	3.8%
5-10	3.13	0.2%	65-70	57.17	4.2%	125-130	47.78	3.5%
10-15	7.01	0.5%	70-75	60.10	4.4%	130-135	44.24	3.2%
15-20	12.48	0.9%	75-80	62.81	4.6%	135-140	40.35	2.9%
20-25	18.56	1.4%	80-85	64.84	4.7%	140-145	35.88	2.6%
25-30	24.53	1.8%	85-90	66.09	4.8%	145-150	30.71	2.2%
30-35	30.17	2.2%	90-95	67.16	4.9%	150-155	24.96	1.8%
35-40	35.30	2.6%	95-100	66.20	4.8%	155-160	18.82	1.4%
40-45	39.86	2.9%	100-105	64.29	4.7%	160-165	12.60	0.9%
45-50	43.74	3.2%	105-110	61.54	4.5%	165-170	7.21	0.5%
50-55	47.14	3.4%	110-115	58.36	4.3%	170-175	3.31	0.2%
55-60	50.60	3.7%	115-120	54.98	4.0%	175-180	0.81	0.1%

Zone	Lumens	% of Luminaire
0-40	132	9.6%
0-60	313	22.9%
0-90	678	49.5%
90-180	691	50.5%



Candela Tabulation
Horizontal Angle (Degrees)

	0	22.5	45	67.5	90	112.5	135	157.5	180	202.5	225	247.5	270	292.5	315	337.5
0	27.5	27.5	27.5	27.5	27.5	27.5	27.5	27.5	27.5	27.5	27.5	27.5	27.5	27.5	27.5	27.5
5	39.0	39.7	36.3	33.2	33.3	33.3	35.8	37.1	36.8	37.1	35.8	33.3	33.3	33.2	36.3	39.7
10	67.1	66.3	55.8	49.0	45.9	42.0	42.1	45.2	47.7	45.2	42.1	42.0	45.9	49.0	55.8	66.3
15	92.1	88.3	75.7	63.6	63.8	51.5	50.9	61.9	71.6	61.9	50.9	51.5	63.8	63.6	75.7	88.3
20	113.1	107.2	91.4	78.0	83.8	61.7	58.2	77.2	88.0	77.2	58.2	61.7	83.8	78.0	91.4	107.2
25	136.9	123.5	104.4	86.3	101.9	70.3	65.2	84.9	95.1	84.9	65.2	70.3	101.9	86.3	104.4	123.5
30	142.2	132.2	111.8	88.6	106.4	76.0	70.9	89.8	100.1	89.8	70.9	76.0	106.4	88.6	111.8	132.2
35	151.8	141.3	115.4	91.3	105.1	85.1	75.3	92.9	103.3	92.9	75.3	85.1	105.1	91.3	115.4	141.3
40	158.5	146.8	118.9	91.7	99.8	94.2	78.5	93.6	104.3	93.6	78.5	94.2	99.8	91.7	118.9	146.8
45	163.5	151.2	120.9	89.2	90.7	100.3	80.6	94.6	104.8	94.6	80.6	100.3	90.7	89.2	120.9	151.2
50	167.1	154.6	121.8	86.1	82.9	106.4	83.0	95.4	106.5	95.4	83.0	106.4	82.9	86.1	121.8	154.6
55	172.3	159.1	123.6	83.2	74.7	108.9	85.5	97.1	108.4	97.1	85.5	108.9	74.7	83.2	123.6	159.1
60	178.1	164.6	126.6	82.2	59.8	113.8	88.9	99.8	110.2	99.8	88.9	113.8	59.8	82.2	126.6	164.6
65	184.5	170.4	130.3	82.3	57.5	115.7	92.1	101.5	112.1	101.5	92.1	115.7	57.5	82.3	130.3	170.4
70	190.8	176.0	134.1	83.0	45.3	118.1	95.0	104.5	116.4	104.5	95.0	118.1	45.3	83.0	134.1	176.0
75	196.6	181.1	137.4	84.1	44.3	121.0	97.9	106.8	118.4	106.8	97.9	121.0	44.3	84.1	137.4	181.1
80	200.7	184.9	140.4	85.0	43.2	124.5	100.4	108.8	121.4	108.8	100.4	124.5	43.2	85.0	140.4	184.9
85	203.8	187.6	141.9	85.5	42.3	127.8	102.0	109.9	122.5	109.9	102.0	127.8	42.3	85.5	141.9	187.6
90	205.4	188.7	142.9	85.8	41.8	133.3	102.5	110.3	122.0	110.3	102.5	133.3	41.8	85.8	142.9	188.7
95	204.7	188.6	142.7	85.8	42.5	133.0	104.4	115.1	130.6	115.1	104.4	133.0	42.5	85.8	142.7	188.6
100	202.3	186.0	141.2	85.6	43.8	129.1	103.2	114.0	129.8	114.0	103.2	129.1	43.8	85.6	141.2	186.0
105	198.2	182.7	139.2	85.2	45.2	125.2	100.9	111.5	127.4	111.5	100.9	125.2	45.2	85.2	139.2	182.7
110	193.2	177.7	135.5	84.5	46.5	121.6	97.2	108.9	124.0	108.9	97.2	121.6	46.5	84.5	135.5	177.7
115	186.4	171.7	132.1	84.2	56.2	118.7	93.5	104.8	119.7	104.8	93.5	118.7	56.2	84.2	132.1	171.7
120	180.0	166.3	129.2	84.8	58.6	116.4	90.4	101.8	116.2	101.8	90.4	116.4	58.6	84.8	129.2	166.3
125	174.1	161.0	125.8	86.6	70.3	111.5	87.5	98.4	112.7	98.4	87.5	111.5	70.3	86.6	125.8	161.0
130	168.8	156.7	124.0	89.7	77.8	108.1	84.2	97.0	111.2	97.0	84.2	108.1	77.8	89.7	124.0	156.7
135	164.2	153.1	123.9	93.0	83.3	104.1	80.7	95.8	109.6	95.8	80.7	104.1	83.3	93.0	123.9	153.1
140	161.4	149.8	123.3	95.4	91.3	98.9	78.0	94.4	110.1	94.4	78.0	98.9	91.3	95.4	123.3	149.8
145	156.5	145.0	120.8	95.2	95.8	90.4	75.2	92.7	110.2	92.7	75.2	90.4	95.8	95.2	120.8	145.0
150	146.9	136.3	115.1	91.9	100.8	83.8	70.7	90.0	104.9	90.0	70.7	83.8	100.8	91.9	115.1	136.3
155	134.8	124.8	107.4	86.7	96.1	77.2	64.3	84.9	96.5	84.9	64.3	77.2	96.1	86.7	107.4	124.8
160	119.8	110.5	95.4	79.8	79.8	67.2	56.5	75.4	86.9	75.4	56.5	67.2	79.8	79.8	95.4	110.5
165	98.2	92.7	80.6	66.4	61.1	55.1	49.4	57.9	63.9	57.9	49.4	55.1	61.1	66.4	80.6	92.7
170	74.9	70.6	61.2	52.9	45.5	43.3	42.7	45.8	46.4	45.8	42.7	43.3	45.5	52.9	61.2	70.6
175	48.2	44.4	40.9	36.6	33.7	33.9	35.7	37.5	36.8	37.5	35.7	33.9	33.7	36.6	40.9	44.4
180	28.1	28.1	28.1	28.1	28.1	28.1	28.1	28.1	28.1	28.1	28.1	28.1	28.1	28.1	28.1	28.1

Average Luminance (cd/m²)
Horizontal Angle (Degrees)

	0	45	90
0	887	887	887
45	2133	1645	2259
55	2123	1593	1919
65	2216	1644	1575
75	2375	1750	1344
85	2554	1882	1489

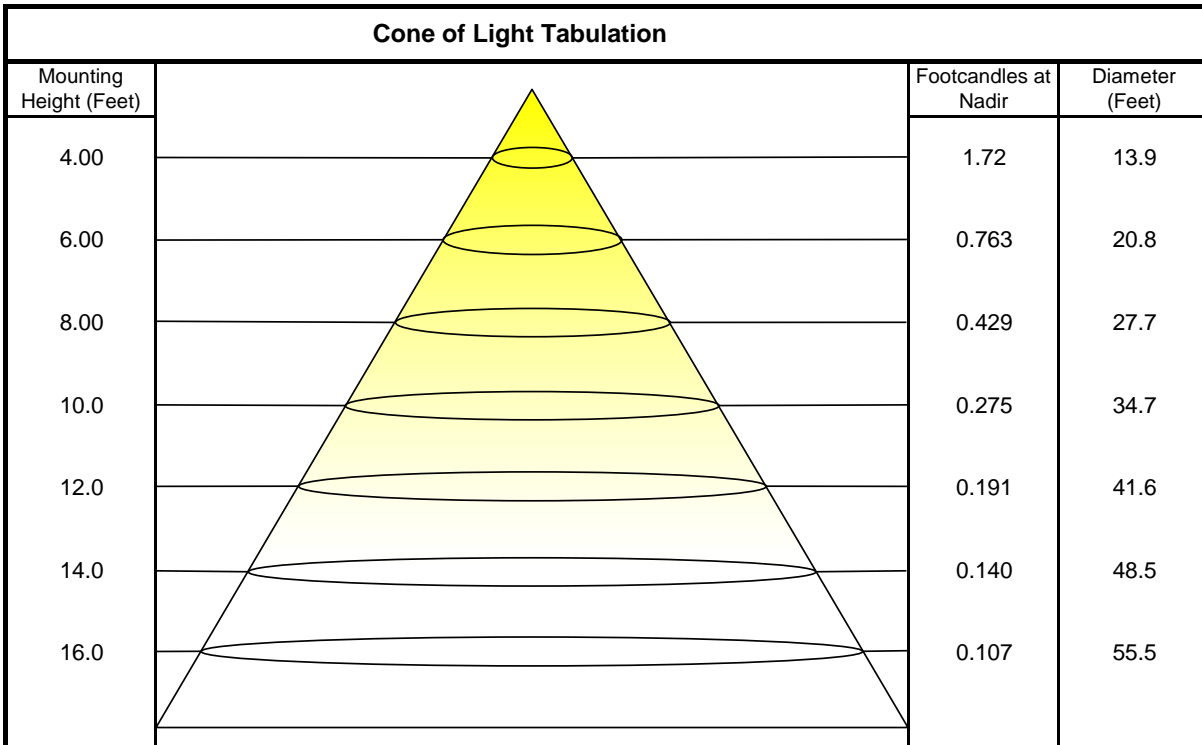


Coefficients of Utilization - Zonal Cavity Method

Effective Floor Cavity Reflectance 20%

Ceiling Cavity Reflectance	80				70				50			30			10			0
Wall Reflectance	70	50	30	10	70	50	30	10	50	30	10	50	30	10	50	30	10	0
Room Cavity Ratio (RCR)	** Values are expressed as percent of total lumen output delivered to the task surface **																	
0	107	107	107	107	99	99	99	99	83	83	83	69	69	69	56	56	56	50
1	93	87	81	76	85	79	74	70	66	62	58	53	50	48	42	40	38	32
2	83	73	65	58	75	67	60	54	55	50	45	44	40	36	34	31	28	23
3	74	63	54	46	68	57	49	43	47	41	36	38	33	29	29	25	22	18
4	67	55	45	38	61	50	42	35	41	34	29	33	28	23	25	21	18	14
5	62	48	39	32	56	44	35	29	36	29	24	29	24	20	22	18	15	11
6	56	43	33	27	51	39	31	25	32	26	21	26	20	17	20	16	13	9
7	52	38	29	23	47	35	27	21	29	22	18	23	18	14	18	14	11	8
8	48	34	26	20	44	31	24	18	26	20	15	21	16	12	16	12	9	7
9	44	31	23	17	40	29	21	16	24	18	13	19	14	11	15	11	8	6
10	41	28	21	15	38	26	19	14	22	16	12	18	13	9	14	10	7	5

Beam and Field Information	
CIE Type:	Direct/Indirect
Center Beam Intensity:	27.5 Candela
Central Cone Intensity:	#REF! Candela
Beam Flux:	1369.0 Lumens
Beam Angle (0-180):	#REF! Degrees
Beam Angle (90-270):	#REF! Degrees
Field Angle (0-180):	#REF! Degrees
Field Angle (90-270):	#REF! Degrees





ISOFootcandle Plot

Mounting Height - 8 Feet

