



Distribution - Goniophotometer

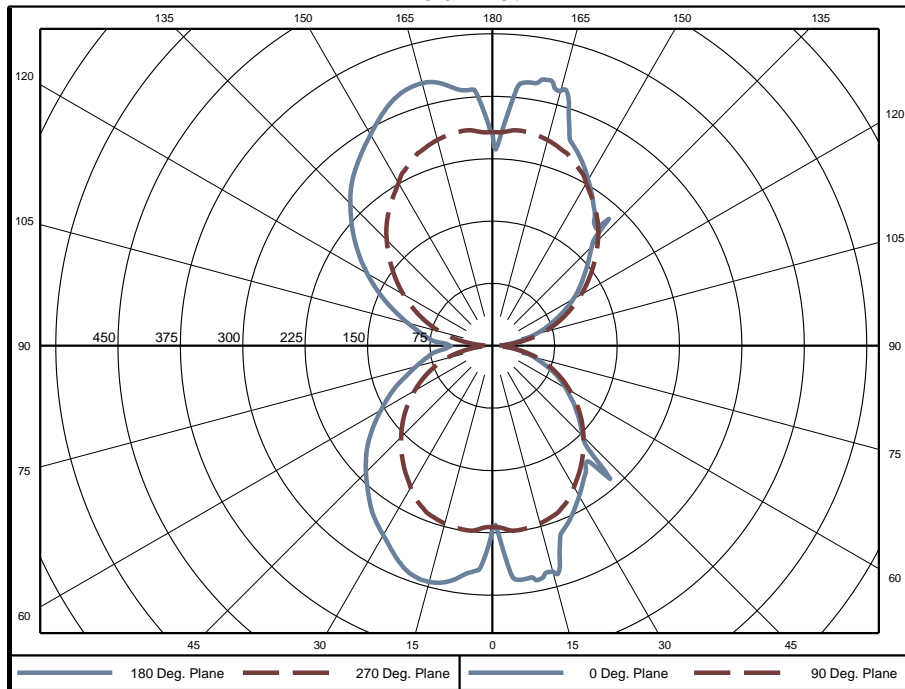
Distribution Test Conditions

Temperature	Voltage	Current	Power	Power Factor	Frequency	Current THD
25.8 °C	120.0 VAC	0.2435 A	28.96 W	0.991	60 Hz	6.25 %

Summary of Results

Spacing Criteria	Total Lumen Output:	1762 Lumens
0-180: 1.36	Luminaire Efficacy:	60.8 lm/w
90-270: 1.31	Maximum Candela:	329 Candela
Corrected UGR (Room Dimension: X=4H, Y=8H, Reflectances: 70/50/20%, S/H: 1)		
Crosswise: 12.5	Endwise: 12.5	

Polar Plot



Zonal Lumen Summary

Zone	Lumens	% of Luminaire	Zone	Lumens	% of Luminaire	Zone	Lumens	% of Luminaire
0-5	5.82	0.3%	60-65	55.19	3.1%	120-125	68.30	3.9%
5-10	19.10	1.1%	65-70	47.91	2.7%	125-130	74.02	4.2%
10-15	32.54	1.8%	70-75	39.14	2.2%	130-135	77.76	4.4%
15-20	44.76	2.5%	75-80	30.43	1.7%	135-140	79.87	4.5%
20-25	54.34	3.1%	80-85	21.88	1.2%	140-145	78.89	4.5%
25-30	61.53	3.5%	85-90	14.34	0.8%	145-150	74.94	4.3%
30-35	66.89	3.8%	90-95	14.46	0.8%	150-155	69.11	3.9%
35-40	70.19	4.0%	95-100	23.51	1.3%	155-160	61.06	3.5%
40-45	71.54	4.1%	100-105	33.64	1.9%	160-165	50.48	2.9%
45-50	69.52	3.9%	105-110	43.67	2.5%	165-170	36.51	2.1%
50-55	66.71	3.8%	110-115	53.17	3.0%	170-175	21.27	1.2%
55-60	61.40	3.5%	115-120	61.42	3.5%	175-180	6.48	0.4%

Zone	Lumens	% of Luminaire
0-40	355	20.2%
0-60	624	35.4%
0-90	833	47.3%
90-180	929	52.7%



Candela Tabulation
Horizontal Angle (Degrees)

	0	22.5	45	67.5	90	112.5	135	157.5	180	202.5	225	247.5	270	292.5	315	337.5
0	220.0	220.0	220.0	220.0	220.0	220.0	220.0	220.0	220.0	220.0	220.0	220.0	220.0	220.0	220.0	220.0
5	279.4	279.8	264.1	236.6	222.3	247.6	265.0	270.2	272.5	270.2	265.0	247.6	222.3	236.6	264.1	279.8
10	283.1	286.4	285.1	269.3	223.5	267.9	274.4	282.3	286.5	282.3	274.4	267.9	223.5	269.3	285.1	286.4
15	280.9	283.5	285.5	280.1	221.2	267.3	283.2	291.4	293.7	291.4	283.2	267.3	221.2	280.1	285.5	283.5
20	240.5	250.4	276.5	273.0	217.0	266.6	284.2	289.7	290.8	289.7	284.2	266.6	217.0	273.0	276.5	250.4
25	225.3	226.9	242.0	263.0	208.9	263.1	275.9	278.9	277.7	278.9	275.9	263.1	208.9	263.0	242.0	226.9
30	208.5	209.3	216.2	245.4	196.5	253.5	262.1	263.8	262.5	263.8	262.1	253.5	196.5	245.4	216.2	209.3
35	192.6	192.6	197.3	228.4	183.3	238.2	246.2	249.2	249.2	249.2	246.2	238.2	183.3	228.4	197.3	192.6
40	182.9	174.3	177.3	196.9	169.4	222.2	228.0	232.3	232.1	232.3	228.0	222.2	169.4	196.9	177.3	174.3
45	154.1	160.4	159.5	167.9	155.0	203.2	208.9	214.2	215.0	214.2	208.9	203.2	155.0	167.9	159.5	160.4
50	135.7	134.7	158.4	147.6	140.2	182.4	189.6	196.5	197.6	196.5	189.6	182.4	140.2	147.6	158.4	134.7
55	118.7	116.1	119.5	126.5	124.4	160.3	169.1	176.3	176.9	176.3	169.1	160.3	124.4	126.5	119.5	116.1
60	102.0	99.3	99.3	106.2	107.9	138.7	148.3	155.0	154.9	155.0	148.3	138.7	107.9	106.2	99.3	99.3
65	86.2	83.8	81.5	93.3	91.2	116.8	130.4	133.5	134.6	133.5	130.4	116.8	91.2	93.3	81.5	83.8
70	67.7	66.2	65.7	65.9	74.2	96.1	105.1	111.9	113.1	111.9	105.1	96.1	74.2	65.9	65.7	66.2
75	51.6	49.3	48.7	47.4	56.5	74.7	83.6	92.5	94.7	92.5	83.6	74.7	56.5	47.4	48.7	49.3
80	34.8	33.3	32.9	31.7	36.7	52.1	65.5	77.1	79.6	77.1	65.5	52.1	36.7	31.7	32.9	33.3
85	20.7	19.5	18.1	16.0	17.2	32.6	51.3	63.0	63.8	63.0	51.3	32.6	17.2	16.0	18.1	19.5
90	22.1	20.9	15.6	8.8	2.9	15.8	33.7	47.1	49.9	47.1	33.7	15.8	2.9	8.8	15.6	20.9
95	16.8	18.6	18.1	17.3	19.6	35.3	53.6	66.4	72.2	66.4	53.6	35.3	19.6	17.3	18.1	18.6
100	33.2	35.8	36.2	35.5	42.0	59.1	71.3	81.9	87.1	81.9	71.3	59.1	42.0	35.5	36.2	35.8
105	52.9	54.9	54.6	54.0	64.5	84.4	93.2	101.1	105.2	101.1	93.2	84.4	64.5	54.0	54.6	54.9
110	72.1	73.6	74.3	73.9	84.6	106.6	116.9	123.3	126.7	123.3	116.9	106.6	84.6	73.9	74.3	73.6
115	92.1	93.8	92.6	96.5	104.1	129.1	143.1	146.7	150.2	146.7	143.1	129.1	104.1	96.5	92.6	93.8
120	112.2	112.6	111.3	118.9	123.4	153.1	163.3	170.6	174.0	170.6	163.3	153.1	123.4	118.9	111.3	112.6
125	130.2	130.2	133.1	142.0	142.3	177.7	185.5	194.3	197.5	194.3	185.5	177.7	142.3	142.0	133.1	130.2
130	148.5	150.9	155.8	166.2	161.1	203.1	208.8	215.9	220.1	215.9	208.8	203.1	161.1	166.2	155.8	150.9
135	169.0	191.0	179.0	191.6	179.6	227.6	232.1	237.1	241.7	237.1	232.1	227.6	179.6	191.6	179.0	191.0
140	190.7	196.9	201.3	232.2	196.8	249.2	253.9	257.5	261.7	257.5	253.9	249.2	196.8	232.2	201.3	196.9
145	211.0	215.9	222.2	255.8	211.5	265.9	273.0	275.4	277.7	275.4	273.0	265.9	211.5	255.8	222.2	215.9
150	230.3	235.4	242.5	281.3	225.8	281.3	290.7	292.3	293.2	292.3	290.7	281.3	225.8	281.3	242.5	235.4
155	249.7	255.6	287.7	293.7	239.4	291.1	306.4	309.0	309.7	309.0	306.4	291.1	239.4	293.7	287.7	255.6
160	270.6	299.2	310.2	305.6	249.4	297.1	315.8	321.3	322.8	321.3	315.8	297.1	249.4	305.6	310.2	299.2
165	317.3	324.3	321.3	305.1	256.2	301.4	316.9	326.3	326.9	326.3	316.9	301.4	256.2	305.1	321.3	324.3
170	322.1	322.9	320.2	276.5	260.2	306.0	309.9	318.1	318.1	318.1	309.9	306.0	260.2	276.5	320.2	322.9
175	302.6	286.7	270.0	245.4	259.8	286.0	304.8	308.2	308.9	308.2	304.8	286.0	259.8	245.4	270.0	286.7
180	257.0	257.0	257.0	257.0	257.0	257.0	257.0	257.0	257.0	257.0	257.0	257.0	257.0	257.0	257.0	257.0

Average Luminance (cd/m²)

Horizontal Angle (Degrees)

	0	45	90
0	3552	3552	3552
45	1408	1627	2831
55	1063	1215	2581
65	781	853	2268
75	488	541	1825
85	211	222	828

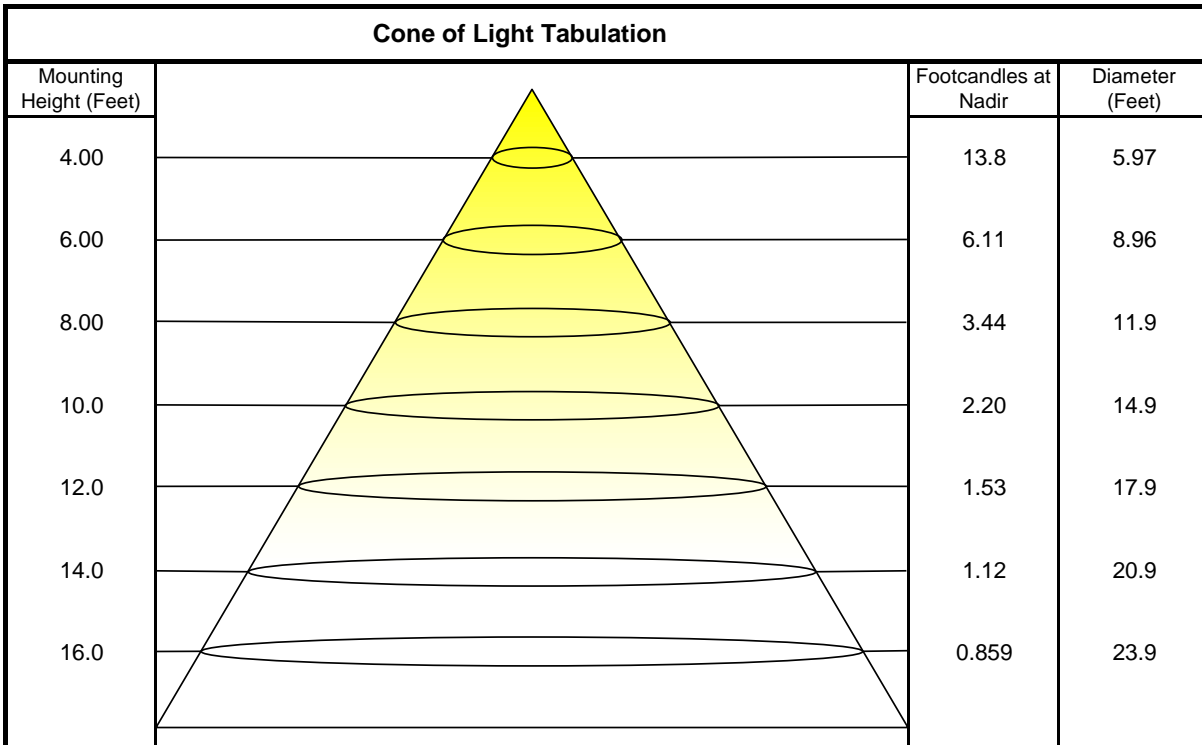


Coefficients of Utilization - Zonal Cavity Method

Effective Floor Cavity Reflectance 20%

Ceiling Cavity Reflectance	80				70				50			30			10			0
Wall Reflectance	70	50	30	10	70	50	30	10	50	30	10	50	30	10	50	30	10	0
Room Cavity Ratio (RCR)	** Values are expressed as percent of total lumen output delivered to the task surface **																	
0	106	106	106	106	98	98	98	98	82	82	82	67	67	67	54	54	54	47
1	96	92	88	84	88	84	81	78	71	68	66	58	56	54	46	45	44	38
2	88	80	73	68	80	73	68	63	62	57	54	51	48	45	40	38	36	32
3	80	70	62	56	73	64	58	52	54	49	45	44	41	38	36	33	31	26
4	73	62	54	47	67	57	50	44	48	42	38	39	35	32	32	29	26	23
5	67	55	47	40	61	51	43	38	43	37	33	35	31	28	28	25	23	19
6	61	49	41	35	56	45	38	33	38	33	28	32	27	24	26	22	20	17
7	57	44	36	31	52	41	34	29	35	29	25	29	25	21	23	20	18	15
8	53	40	32	27	48	37	30	25	32	26	22	26	22	19	21	18	16	13
9	49	37	29	24	45	34	27	22	29	24	20	24	20	17	20	17	14	12
10	46	33	26	21	42	31	25	20	27	21	18	22	18	15	18	15	13	11

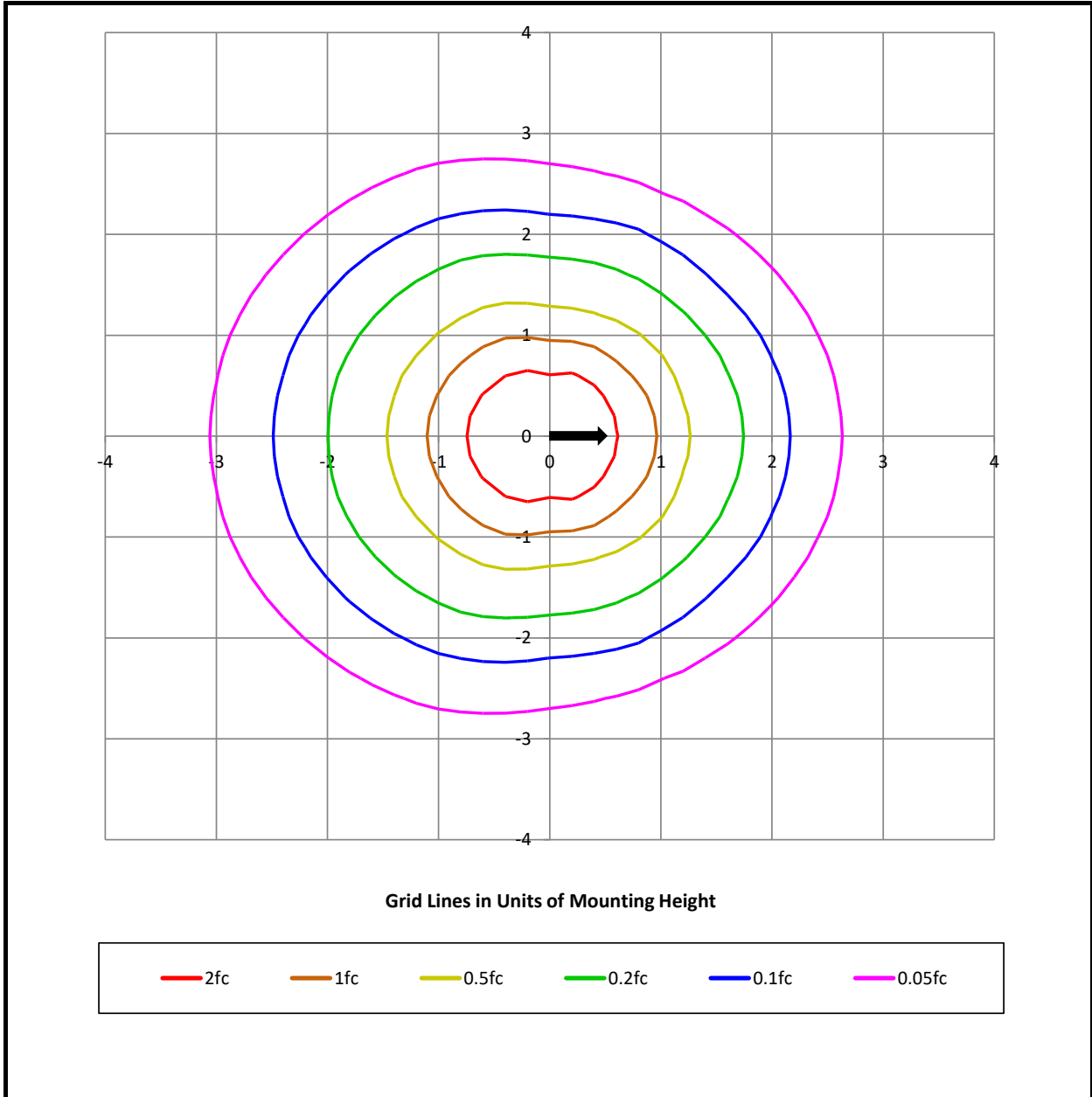
Beam and Field Information	
CIE Type:	Direct/Indirect
Center Beam Intensity:	220.0 Candela
Central Cone Intensity:	237 Candela
Beam Flux:	1441.2 Lumens
Beam Angle (0-180):	128.1 Degrees
Beam Angle (90-270):	118.7 Degrees
Field Angle (0-180):	N/A Degrees
Field Angle (90-270):	167.5 Degrees





ISOFootcandle Plot

Mounting Height - 8 Feet



Grid Lines in Units of Mounting Height

