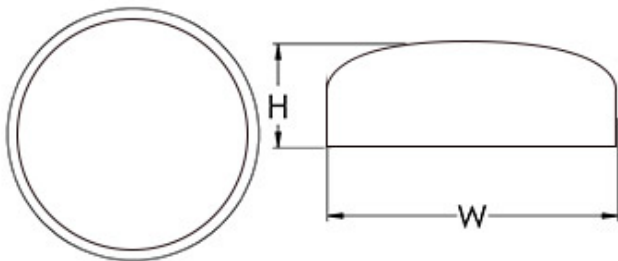


DIMENSIONS



W	H	BASE MODEL NO.
23 5/8"	8 1/2"	S7352-L24
23 5/8"	8 1/2"	S7352-L24A
23 5/8"	8 1/2"	S7352-3N15 (Lamps by others)

SPECIFICATIONS

Voltage:

L24 – 120/277V, 0-10V 1% Dimming

L24A – 120V Phase Dim – AND 120/277V 0-10V Dimming (Driverless LED)

3N15 – 120V

Mounting: Mounts to all Standard Electrical Junction Boxes (by others) With Hardware Provided.

FEATURES

- Molded Opal Glass Lens
- Spun Metal Housing
- S7352-L24 Only – 0-10V 1% Dimming
- S7352-L24A Only – 120V Phase Dimming and 120/277V 0-10V Dimming (Driverless 24W LED)
- S7352-3N15 Only – (3) E26 Sockets for up to 15W LED Lamps (by others)

ORDER AS A COMPLETE UNIT:

Model No. + Lamp Code + CCT + Finish + Option Code

S7352-L24 + 27K + PI + Option
 S7352-L24A + 30K
 35K
 40K

S7352-3N15 + PI

FINISHES

PT Powder Coated Finishes*

*(Specify Color Code from the list of Finishes – ie. White would be 'WH')

OPTIONS

EML Remote 10W Emergency LED Battery Backup (Requires Additional Power Cable)